

# SEND and Inclusion Network Meetings

Secondary/Post 16  
22<sup>nd</sup> September 2025



Please can you mute  
your mic when you join  
the meeting

# On today's agenda...



**3:30pm – Welcome and Introductions**

Presenter: Emma Simkins

**3:35pm– Early Help SEND Drop-ins**

Presenter: Greg Mcaloon

**3:45pm – EAS, CME and Virtual School**

Presenter(s): Jo Smith, Laura Goodall and Adriana Coupe

**4:00pm - EHCP Team**

Presenter(s): Gaynor Styles and Keith Melville

**4:20pm - Marches Careers Hub**

Presenter: Sharon Ruff

**4:25pm - Supported Internships**

Presenter: Emma Simkins

**4:30pm – Summary and Close**

Presenter: Emma Simkins



Shropshire  
Council

# Updates from the Early Help Team

# EARLY HELP SEND MEET & CHAT FAMILY DROP-IN

CONNECTING FAMILIES WITH  
SUPPORT ACROSS SHROPSHIRE

**GREG MCALOON**  
EARLY HELP SEND OPERATIONAL LEAD



# Introduction to the Sessions

## **Purpose of Sessions**

Sessions provide a welcoming environment for families to ask questions and receive guidance about SEND.

## **Goals and Support**

The sessions aim to offer advice, facilitate service access, and foster open dialogue among parent carers and professionals.

## **Community Connection**

These events build a community-oriented approach to bridge families with SEND services and professionals.



## Autumn Term Dates & Locations

Date	Time	Location
23rd September	2-4pm	Raven House, Market Drayton
14th October	1-3pm	Bridgnorth Library
13th November	10-12pm	The Lantern, Shrewsbury
4th December	1-3pm	Oswestry Library

# What Support is Available

## **Multi-sector Professional Support**

Professionals from education, health, and social care are available to provide comprehensive advice, support and guidance to our families at the sessions.

## **Tailored Guidance and Advocacy**

Families will receive personalised advice on EHCPs, the local offer, mental health, and wellbeing tailored to individual needs.

## **Holistic and Flexible Approach**

Sessions are designed to be flexible and responsive, ensuring relevant support for every family's unique situation.

# Professionals Attending

## Confirmed for Raven House:

- Neurodiversity Practitioners
- Designated Clinical Officer for SEND
- EHCP Case Officer
- Early Help Play Practitioner
- KIDS Shropshire Autism Support
- SENDIASS
- Preparing for Adulthood Team
- Local Authority Attendance Officer
- Family Information Service (FIS)
- Early Help 0–5 Team
- Parent Carer Council (PACC)
- Shropshire HAF (Holiday Activities & Food)



# Parent Feedback & Data Gathering

## Collecting Parent Feedback

Feedback is collected via an online form accessible by QR code at each SEND session to engage parents effectively.

## Shaping Future Sessions

Parents suggest future topics and share experiences to help tailor sessions to better meet family needs.

## Improving Support Services

Collected data helps evaluate and improve the effectiveness of current SEND support services in Shropshire.

## Community-Driven Approach

Involving parents ensures sessions are responsive and reflect the community's needs and voices.



# Call to Action

## **Encourage Attendance**

Please actively encourage parent carers of children with SEND to attend the upcoming Meet & Chat sessions. These events offer a valuable opportunity for families to access support in a relaxed and welcoming environment.

## **Share the Information**

Distribute session details through your networks—schools, clinics, community groups, and social media, to ensure families are aware of the dates, locations, and the support available.

## **Support Accessibility**

If you know families who may face barriers to attending (e.g. transport, confidence, language), please help them explore ways to participate or connect them with someone who can assist.

## **Promote Feedback**

Encourage families to complete the feedback form, either at the session or online. Their input helps shape future sessions and ensures we're meeting real needs.



**SEND local offer:** <https://next.shropshire.gov.uk/the-send-local-offer/news/meet-and-chat-send/>

**Email:** [Greg.mcaloon@shropshire.gov.uk](mailto:Greg.mcaloon@shropshire.gov.uk)





# Updates from EAS, CME and Virtual School

## Inclusion and AP Task Force Lead



Sits within EAS

3 key areas of development to support the SEND & AP Change Programme (DFE)

Traded elements to support sustainability

- SEMH Outreach
  - Alternative Provision expansion
- Support for Integration and Engagement with mainstream e.g. through FAP
  - New EBSA support re AI tech and potential roles

## Critical shifts to enable inclusion & sustainability

We want to shift the focus of local systems towards greater inclusion, using available resources more effectively across partners and between settings to identify and meet needs in mainstream education.

### To move from...

**Fragmented local landscape of provision** for inclusion across education, health and local authorities

**Reliance on statutory assessments and referrals** to specialist services to access support

**Lack of confidence** among parents and settings that special educational needs can be met within mainstream

**Lack of capacity and support** within the mainstream workforce to meet needs inclusively

**Unsustainable pressure on High Needs funding** and conflict between partners about how to prioritise funding



### Towards...

**More joined-up provision** that responds to local needs and reflects a more consistent national approach

Greater capacity for prevention, early identification and intervention to **avoid needs escalating**

Consistent and comprehensive offer of support for inclusion that is **valued by settings and has confidence of families**

**Upskilling mainstream staff** to be able to identify needs and suitable interventions, including by utilising specialist workforce differently

**Better use of resources across local areas**, with investment in earlier support and targeted intervention

## Early Intervention & Outreach

Reach – Inclusion  
Hotline  
07816204706

Senior Outreach  
Advisors  
(SEMH) x 2

Outreach  
Support Officers  
(SEMH) x 2

Occupational  
Therapist (0.4)

Alternative  
Provisions  
Directory

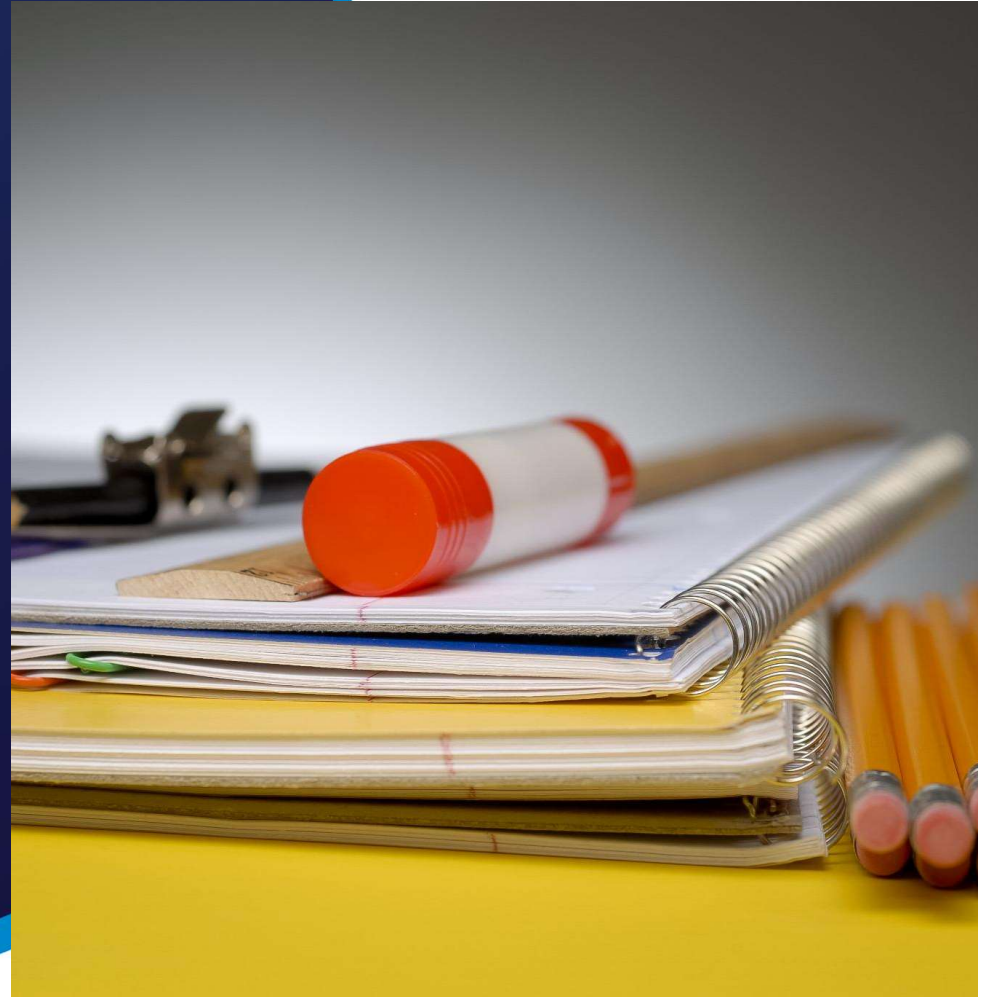
## Re-Integration & Engagement

Inclusion  
Mentors x 3

Family Support  
Worker

Available to all Shropshire Primary & Secondary Schools  
Call the Reach Hotline **07816204706** to discuss

# Changes to DfE Guidance for Children Missing Education (CME)





## What is CME?

CME are children of compulsory school age who are not registered pupils at a school and are not receiving suitable education otherwise than at a school

CME includes children who:

- are in the process of applying for a school place
- have been offered a school place for a future date but have not yet started
- are receiving elective home education (EHE) that has been assessed as unsuitable
- have been recorded as CME for an extended period, for example where their whereabouts is unclear or unknown

# Overview of Statutory Responsibilities



## Legal Duty to Monitor Attendance

Schools and authorities are legally required to track student attendance accurately and consistently.



## Investigate Unexplained Absences

Unexplained student absences must be promptly investigated to identify and resolve issues.



## Collaborative Prevention Efforts

Schools and local authorities collaborate to implement strategies preventing children from missing education.

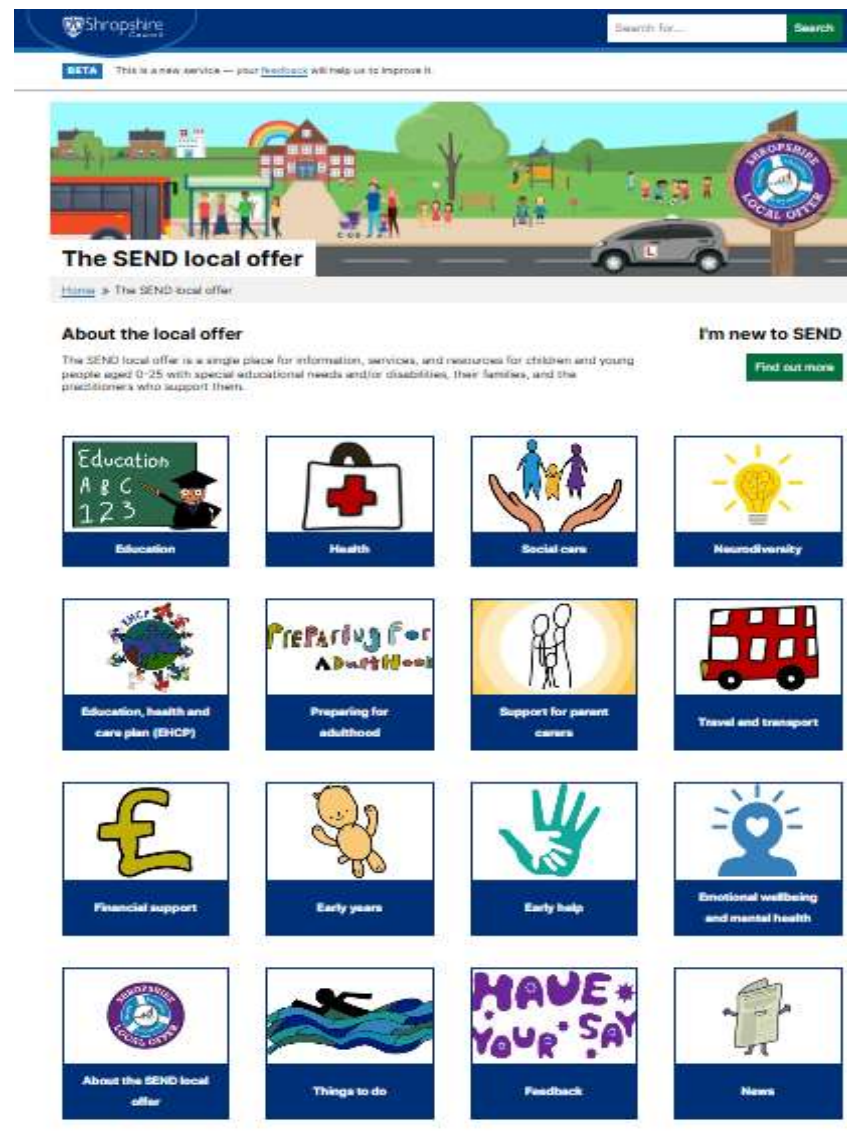


# Updates from the EHCP Team

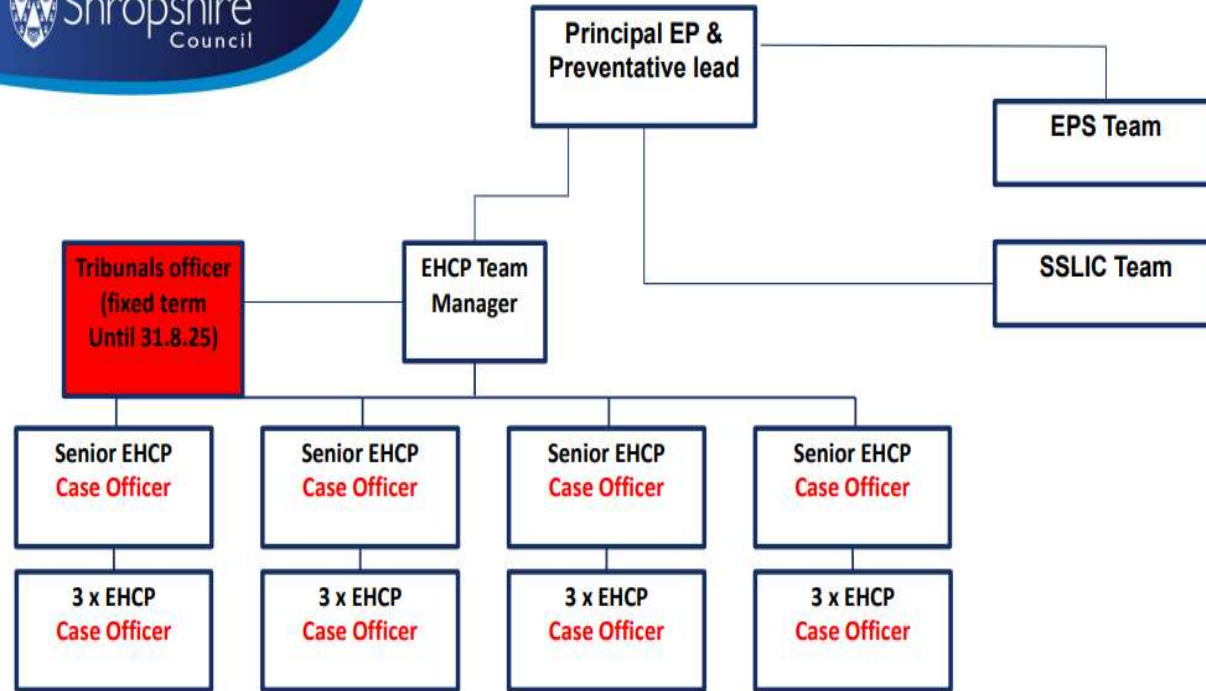
# Shropshire Local Offer

## [The SEND local offer | Shropshire Council](#)

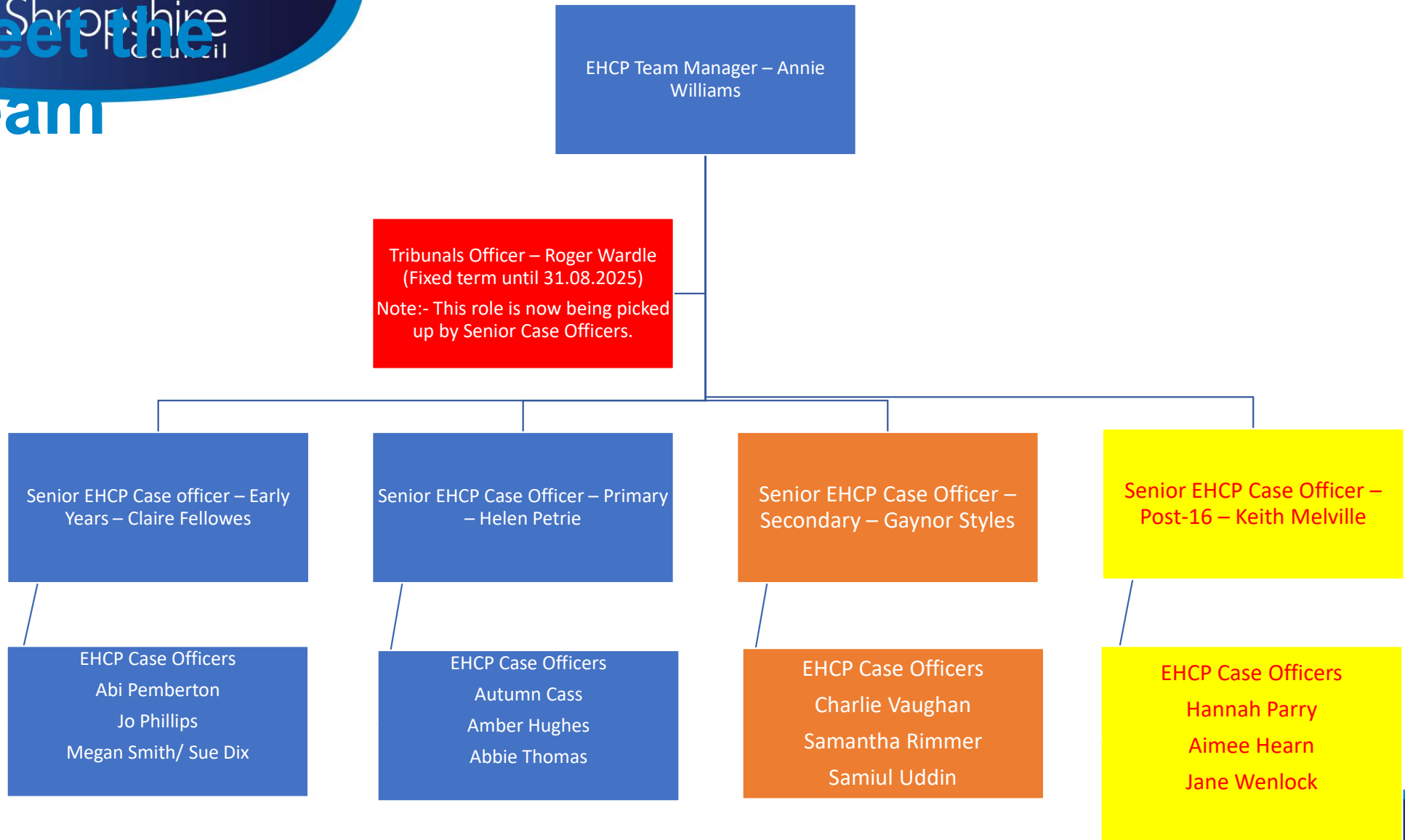
- Area covered:-
- Education
- Health
- Social care
- Neurodiversity
- EHCP
- Preparing for Adulthood
- Support for Parent/ Carers
- Travel and Transport
- Financial support
- Early Years
- Early Help
- Emotional Wellbeing and Mental Health



The screenshot shows the Shropshire SEND Local Offer website. At the top, there is a search bar and a 'Search' button. Below the search bar, a banner image depicts a colorful town scene with a bus, a car, and people. The main heading is 'The SEND local offer'. Below this, there is a 'Home' link and a 'BETA' notice. The page is divided into two columns. The left column is titled 'About the local offer' and contains a paragraph describing the service. The right column is titled 'I'm new to SEND' and has a 'Find out more' button. Below these columns is a grid of 16 icons, each representing a different service area: Education, Health, Social care, Neurodiversity, Education, health and care plan (EHCP), Preparing for adulthood, Support for parent carers, Travel and transport, Financial support, Early years, Early help, Emotional wellbeing and mental health, About the SEND local offer, Things to do, Feedback, and News.



**Note – Role of Annual Review Recovery Team**





Shropshire  
Council

# Secondary Team

## Contact Details

- [gaynor.styles@shropshire.gov.uk](mailto:gaynor.styles@shropshire.gov.uk)
  - [charlie.vaughan@shropshire.gov.uk](mailto:charlie.vaughan@shropshire.gov.uk)
  - [samantha.rimmer@shropshire.gov.uk](mailto:samantha.rimmer@shropshire.gov.uk)
  - [samiul.uddin@shropshire.gov.uk](mailto:samiul.uddin@shropshire.gov.uk)
- 
- EHCP Team email address [ehcpteam@shropshire.gov.uk](mailto:ehcpteam@shropshire.gov.uk)
  - SEN Team Manager [annie.williams@shropshire.gov.uk](mailto:annie.williams@shropshire.gov.uk)

# Case Officer Allocations Secondary Team

EHCP Case Officer	Area of main responsibility	Case Allocation of Mainstream Schools	Case Allocation by home postcode for all other cases
<b>Sam Rimmer</b>	North Shropshire	Sir John Talbots and SJT hub Lakelands & Kettlemere Centre Thomas Adams Corbet Grove Marches St Martins Burton Borough School	CW3, LL14, ST19, SY22, SY14, SY13, SY12, SY10, SY11, SY4, TF9
<b>Charlie Vaughan</b>	Central Shropshire	Belvidere Secondary Meole Brace Priory Shrewsbury Academy	SY1, SY3, SY5, SY6, SY9
<b>Samiul Uddin</b>	South Shropshire	Mary Webb Bridgnorth Endowed Idsall Oldbury Wells Church Stretton Lacon Childe William Brookes Community College, Bishop Castle Ludlow Tenbury Ormiston Academy – Tenbury Wells	HR1, WR15, SY2, SY7, SY8, SY16, SY21, TF2, TF3, TF4, TF5, TF6, TF7, TF8, TF10, TF11, TF12, TF13, DY12, DY14, WV5, WV6, WV7, WV15, WV16

# Annual Reviews

## Key messages 25/26

- Year 11 Annual Reviews should be submitted to the EHCP Team no later than **31<sup>st</sup> October 2025** and should lead to a finalised plan before 31<sup>st</sup> March 2026.
- Annual Review documentation must evidence the importance of:
  - PFA themes
  - Voice of the Young Person
  - Clear feedback to LA on aspirations, preferences, course choices, exam results etc
  - Evidence to support onwards setting requests
  - Updates from other key professionals – where applicable, critical information required from Social Care/Health etc. SC/Health colleagues should be invited to attend the Annual Review – if their physical presence is not possible, they should submit an update report to be included with the schools Annual Review paperwork. **Sec 9.176 (CoP)** *‘The school must seek advice and information about the young person prior to the meeting from all parties invited, and send any advice and information gathered to all those invited at least two weeks before the meeting.’*
- Settings have a responsibility to inform and update the EHCP Officer of changes to aspiration, course choices etc as the academic year unfolds to ensure the Post 16 setting named in Section I remains appropriate.
- Annual Review link (Local Offer) [EHCP annual reviews | Shropshire Council](#)

# Phase Transfers

## Annual Review – Statutory Timeframes

### Year 11

<b>31<sup>st</sup> March 2026</b>	<b>15 days</b>	<b>15 days</b>	<b>Within 4 weeks following the AR</b>	<b>Within 2 weeks of AR</b>	<b>Autumn Term 1 2025</b>
Final EHCP naming setting	(next setting) Consultation period	Parents/Guardians respond to the PAP and name a school of their choice	LA decision shared Proposed Amended Plan (PAP) issued	School/setting send AR to invitees and LA	At least 2 weeks before agreed date Invitation to attend Annual Review (AR)

# Costed Provision Map (CPM) Request to Access/Uplift funding

To support discussions and to support evidence of increased needs, Shropshire settings are requested to include a costed provision map and a 'day in the life' document demonstrating how the school has utilised its resources to make provision thus far – up to £6, 000 (SEND Support).

It should clearly evidence purposeful, evidence-based provision costing at least the £6000 threshold from the notional SEN budget.

When deciding what to put onto a provision map for an EHCP Request or to request an uplift in funding, it is advisable to start with evidence extracted from external/professional reports ***that is additional to and different from that which is offered through the school's curriculum 'ordinarily available provision' and which are reasonable steps or adjustments? \****

- ***What does the CYP need to be able to do in 12 months time that they can't do now?***
- ***What support will they need to help them achieve this?***
- ***Who is best placed to provide this support and how is it best provided?***

\* 'reasonable adjustments' or 'reasonable steps' are referred to in the Equality Act 2010

- <https://www.gov.uk/guidance/equality-act-2010-guidance> and [SEND code of practice: 0 to 25 years - GOV.UK](#) (9:91-9:94 and are not considered to be additional to and different from in this context.
- For further information on reasonable adjustments:  
[https://issuu.com/familyvoice/docs/a\\_guide\\_to\\_reasonable\\_adjustments](https://issuu.com/familyvoice/docs/a_guide_to_reasonable_adjustments)

Please note that...

- Professionals reports often indicate the type of provision/intervention and strategies required.
- Think about the objective of the provision rather than the geography i.e. sensory work does not have to be done in the Sensory Room.
- Interventions do not have to be done outside the classroom.
- Interventions do not have to be delivered by solely support staff.
- Provision should be matched accurately to a young persons need as evidenced in professional reports and assessments rather than because it is an intervention that the school is already running/has staff trained in.
- Consider how the Young Person needs to develop their independence (PFA theme) as they grow older and prepare for Post 16 study. 1:1 does not mean the same person, 'attached' right next to the pupil at all times, forever.



# Post 16 Team

## Contact Details

- [keith.Melville@shropshire.gov.uk](mailto:keith.Melville@shropshire.gov.uk)
  - [aimee.hearn@shropshire.gov.uk](mailto:aimee.hearn@shropshire.gov.uk)
  - [hannah.parry@shropshire.gov.uk](mailto:hannah.parry@shropshire.gov.uk)
  - [jane.wenlock@shropshire.gov.uk](mailto:jane.wenlock@shropshire.gov.uk)
- 
- EHCP Team email address [ehcpteam@shropshire.gov.uk](mailto:ehcpteam@shropshire.gov.uk)
  - SEN Team Manager [annie.williams@shropshire.gov.uk](mailto:annie.williams@shropshire.gov.uk)

## Case Officer Allocations – Post-16 Team

<b>EHCP Case Officer</b>	<b>Area of main responsibility.</b>	<b>Case Allocation by home postcode for all other cases.</b>
<b>Jane Wenlock</b>	North Shropshire	SY13, CW3, CW2, SY12, SY4, TF6, TF9, SY11, SY22, SY10, LL14
<b>Hannah Parry</b>	Central Shropshire	SY1, SY2, SY3
<b>Aimee Hearn</b>	South Shropshire	SY5, WV16, WV15, WV6, TF11, TF3, TF4, WV7, WV5, SY6, DY12, DY14, WR15, SY8, TF8, TF12, TF13, SY9, SY21, SY15, SY7

## Annual Reviews of EHCP's - recap

- Held within 12 months of previous review
- Local Authority decides within 4 weeks of the review whether plan is to be maintained, amended or ceased and this decision is communicated to parents/ young person.
- If amending the plan, a proposed amended EHCP will be issued and parents/ young people have 15 days to respond to the proposed amendments.
- The amended EHCP is to be issued within 8 weeks of the Amendment notice.

## Annual Reviews – Key messages – 25/26

- Prioritise Annual Reviews where there is likely to be placement change in July 26
- All post-16 reviews should lead to a finalised plan before 31<sup>st</sup> March 2026 (in all cases from Year 12 onwards where the decision is to amend i.e. all phase transfers at Y14 as well as all those with likely placement change).
- Ideally, LA would need these reviews before Christmas to allow time for amendments, consultations and then finalising.
- Importance of:-
  - PFA themes to feature in the Annual Review meeting
  - Voice of the Young Person
  - Clear feedback to LA on aspirations, preferences, course choices, exam results etc
  - Updates from other key professionals
  - Evidence to support requests

## Preparation for Adulthood recap

- There are 4 main areas that should be considered in Annual Reviews from at least Year 9 onwards:-
  - Education beyond 16 and/or employment/ training
  - Independent Living
  - Participation in wider society: friendships and contributing to the local community (community inclusion).
  - Being as healthy as possible (Health).
- 
- NDTI (National Development Team for Inclusion) resources
  - [PfA-Outcomes-Framework.pdf](#)

## Consultations - recap

- Following an Annual Review, the LA may receive a request for a change of setting.
- The EHCP would be amended and this would then be sent to new settings to see if they are able to meet the young person's needs.
- This process is known as 'consulting' with a setting.
- The setting has 15 days to respond.
- The LA is guided by the parent/ young person as to their preference for a new school or setting.
- Consultation responses checked to ensure legal compliance.

## Key Issues 2025/2026

- Post-16 Commissioning
  - Work on developing a banding structure for post-16
  - Need for post-16 settings to include costings as part of consultation response at least for this year whilst banding structure being developed
  - Work on new process for post-16 commissioning, contracting etc
- Early notification when a post-16 placement is vulnerable (Need for an Annual Review)
- LA attendance at Annual Reviews
- Timeliness of LA response
- Supported Internships

## Post-16 Team key areas of focus 2025/2026

- Data – developing systems and ensuring accuracy
- Building knowledge and expertise within team
- Developing our links with providers
- Annual Reviews – response time
- Quality Assurance
- EHCNA – response time
- NEETS – follow up – re-engagement? Cease?
- Post-16 commissioning
- Alternative Provision
- EOTAC
- Transport



Shropshire  
Council

# Updates from the Marches Careers Hub



# Who are we and what do we do?



Support schools and colleges across Herefordshire, Shropshire and Telford & Wrekin to develop and enhance their careers programmes using the Gatsby Benchmarks of good practice.



Build strong links between educational institutions and businesses supported by our network of business volunteers



# Quick Careers Hub update for SEND specialists - local perspective



<https://www.marchescareershub.co.uk/>

## Marches Careers Hub tools and resources for educators

logbooks, guides, web resources

## Marches Careers Hub tools and resources for Employers

Awareness raising sessions, support to connect with specialist settings and SEND in mainstream groups

## Marches Careers Hub SEND and Inclusion Community of Practice

- 18<sup>th</sup> November 2025
- 18<sup>th</sup> March 2026
- 18<sup>th</sup> June 2026

email: [sharon.ruff@shropshire.gov.uk](mailto:sharon.ruff@shropshire.gov.uk) if you would like an invite

# Quick Careers Hub update for SEND specialists - national perspective

The Careers & Enterprise  
Academy

## Careers and Enterprise academy link



In Progress

### SENCO: Understanding Pathways and Career...

Welcome to the SENCO:  
Understanding Pathways and  
Career Opportunities course...

Course Details >



### Career Related Learning in PSHE Education: Key...

Welcome to the Career-  
Related Learning in PSHE  
Education: Key Stage 1 -2...

Course Details >



### SENCO: Engaging Parents to Empower SEND Futures

Welcome to the Engaging  
Parents to Empower SEND  
Futures Course. Co-developed...

Course Details >

nasen & CEC: Working  
Together to Empower SEND  
Futures

THE CAREERS &  
ENTERPRISE  
COMPANY

nasen  
Helping Everyone Achieve

Raising Aspirations: Engaging Parents to  
Empower SEND Futures link to book [23rd  
Sept - link to book](#)

Inclusive pathways: Creating modern work  
experience opportunities for learners with  
SEND [1st Oct 2025 - link to book](#)



Shropshire  
Council

# Supported Internships



Shropshire  
Council

# enable

supported employment services

## Supported Internships

This is fulltime college course, which provides the opportunity for the young person to learn vital skills in a work placement. As well as attending college, 70% of the interns' course takes place within a local business. Enable offers guidance and support throughout the placement.



### What is involved?

- Workplace training supported by a Job Coach where required (funded via Access to Work)
- Maths and English (if required)
- Personal and social development
- Vocational sessions
- Tutorial with FE provider



[enableservices.co.uk](http://enableservices.co.uk)

01743 276900

[enable@shropshire.gov.uk](mailto:enable@shropshire.gov.uk)

k

# SI Survey Insights for Cohort 2024/25



## Exceptional Satisfaction Levels

Participants rated the Supported Internship programme extremely highly, with an average recommendation score of 4.75 out of 5.

## Positive Staff Impact

Comments praised staff dedication and highlighted their role in boosting participants' confidence.

## Areas for Improvement

Concerns included recruitment freezes and transport issues which were identified as needing attention.

[enableservices.co.uk](https://enableservices.co.uk)

01743 276900

[enable@shropshire.gov.uk](mailto:enable@shropshire.gov.uk)

k

**Current Outcomes**  
**(Enable supported x41 students)**  
**2024/25 (as of Aug 2025)**  
review at 6 months, 12 months & 18 months



Programme	% Paid Employment and/or Apprenticeship
Bespoke (student placements within various businesses around Shropshire)	45%
DFN x 2 Programmes (SaTH & RAF Cosford)	60%
Total	48%

All students stay with Enable programmes to search & support with employment opportunities

[enableservices.co.uk](https://enableservices.co.uk)

01743 276900

[enable@shropshire.gov.uk](mailto:enable@shropshire.gov.uk)

## Supported Intern uptake 2025/26

We still have spaces available on both DFN programmes, but predominately the Robert Jones & Agnes Hunt Orthopaedic Hospital in Gobowen.

The Trust are invested and supportive (and have jobs available at the end of the programme), but we need more students.

We thought this might open the DFN model to students in the North of the County - but we're still looking for them!



**Contact me for more info...**  
**[charlotte.kelly@shropshire.gov.uk](mailto:charlotte.kelly@shropshire.gov.uk)**

[enableservices.co.uk](http://enableservices.co.uk)

01743 276900

[enable@shropshire.gov.uk](mailto:enable@shropshire.gov.uk)

k

## Other services...

### Independent Travel Training

Our objective is to help build up the students confidence and knowledge – allowing them to become familiar with their bus route to school or college.

This course can help individuals learn their route to school or college, giving them the independence to communicate with the public and deal with the exchange of money, as well as providing them with the freedom to travel without relying on anyone else.

#### What are the benefits of this service?

- Increased opportunities for the individual
- Helps prepare young people for adulthood
- Ongoing support for as long as needed
- Increased independence

#### What is the referral criteria for this service?

- All referrals are made through the Shropshire Council Transport Department (apart from Supported Interns – we can support as part of the programme)
- Individuals who are currently using taxis or similar to travel to school/college



[enableservices.co.uk](http://enableservices.co.uk)

01743 276900

[enable@shropshire.gov.uk](mailto:enable@shropshire.gov.uk)

k

## Experts by Experience Service

Enable's Experts team have extensive experience in mental health challenges, neurodiversity, and/or recovery from substance use.

They have all previously been clients of our service and are advocates for employment having a positive effect on wellbeing.

Our Experts offer powerful and candid insights into the benefits of paid employment and their recovery journeys. Experts work across Shropshire and Telford on a variety of projects,

## What can the Expert Team provide?

- **Expert by Experience Advice** - unique insight and ad-hoc support for clients who share concerns about going into work or maintaining work
- **Interview panels** - professional, knowledgeable and experienced Experts to sit on various panels across Enable and the rest of Shropshire Council
- **Lived Experience Group Talks** - real-world insight and awareness to topics such as mental health issues, neurodiversity & substance misuse. Our expert team deliver talks to a wide variety of stakeholders.
- **Training** - Experts are currently expanding our offer of delivering training in Equality, Diversity, and Inclusion (EDI) as well as awareness training of ADHD

Contact us to join a Wellbeing Walk or find out more about how our Experts service can support.



[enableservices.co.uk](https://enableservices.co.uk)

01743 276900

[enable@shropshire.gov.uk](mailto:enable@shropshire.gov.uk)

k

**Contact us if you have any  
questions or queries**



[enableservices.co.uk](https://enableservices.co.uk)

01743 276900

[enable@shropshire.gov.u](mailto:enable@shropshire.gov.uk)

k

# Survey

- **Attn: SENCOs, Headteachers and anyone who has provided advice to support EHC needs assessment/annual review:**
- Shropshire Council and NHS Shropshire, Telford and Wrekin have launched a new survey, to help education, health and care organisations in Shropshire to understand the experience of practitioners and partners who have engaged with the Shropshire EHCP Team in the provision of advice to support Education Health and Care Needs Assessments and annual reviews for children and young people with SEND.
- Complete the survey,
- <https://forms.office.com/e/fyk4KMY9Zf> which is open until **Monday 6 October 2025**

# GSP Proposals for Y6/7 transition

## Option A

- Pupils receiving GSP in Year 6 to have it automatically extended to December of Y7 so that they come up with funding to support transition.
- Secondary school then re-apply, if needed, in January of Y7 once they have got to know the child.
- Secondary schools would receive an e-mail in the summer term to let them know which pupils were coming with GSP and at what level.

## Option B

- GSP to automatically cease at the end of Year 6.
- However, primary and secondary SENCo could do a joint application in the summer term of Y6 – in this case, funding could be awarded for the whole of Y7.

## Pros/Cons

- In Option A, the secondary school don't need to do anything but funding would cease at the end of December of Y7.
- On Option B, secondary school need to work with the Y6 SENCo to put together a joint application – but may be granted have funding for the whole of Y7.

# SEND and AP Change Programme

The Local Offer and SLG are currently being updated to communicate what is happening with the SEND and AP Change programme this academic year.

**NEW:** **monthly online updates** at 12.30pm and 4pm on the following dates to provide schools and settings with information and opportunities to get involved and shape the Local Inclusion Support Offer in Shropshire:

- 15<sup>th</sup> October
- 2<sup>th</sup> November
- 10<sup>th</sup> December
- 21<sup>st</sup> January
- 25<sup>th</sup> February
- 25<sup>th</sup> March

No need to book, just grab a cuppa and join us - click [HERE](#) for Teams links.

# Assistive Technology Lending Library

## Information Briefings and Wave 1 Launch:

Date	Time	Teams link
Wednesday 1st October	16:00-16:45	<a href="#">ATLL Briefing 1/10/25 16:00-16:45</a>
Thursday 2nd October	12:00-12:45	<a href="#">ATLL Briefing 2/10/25 12:00-12:45</a>
Friday 3rd October	14:00-14:45	<a href="#">ATLL Briefing 3/10/25 14:00-14:45</a>

You only need to attend one of these sessions.

**Scanning Pens** will be attending to launch their part of the pilot.

ATLL survey – please complete by Friday 10<sup>th</sup> October to help us shape the lending library:

- [ATLL survey for schools and settings](#)
- [ATLL survey for CYP and families](#)

## Welcome to the Shropshire Learning Gateway

What are you looking for?

### Early Years Information

Information on Early Years' funding, support, advice and training in Shropshire.

[Go to item](#)

### CPD

CPD opportunities for schools and settings.

[Go to item](#)

### Leadership, management and administration

Information for headteachers, governors and school administrators. Includes link to the weekly 'Education Update' (Tuesday email).

[Go to item](#)

### Teaching & Learning

Information for teaching assistants, teachers and subject leaders.

### Schools Human Resources, payroll and wellbeing

Schools HR. Payroll. Occupational Health. Wellbeing resources

### Education Access Service

School Attendance, Permanent Exclusions, Suspensions, Elective Home Education, Child Missing Education, Child Employment, Performance Licensing



## Reminder

# EBSA Toolkit and AV1 Robots launch

AV1 Robots are arriving in Shropshire! Please find link to webinar below as Shropshire prepares to launch their EBSA Toolkit, their offer of support and the AV1 Robots.

'No Isolation' will present information and answer questions around the use of the AV1 Robots and Shropshire will share their offer of support, an EBSA toolkit and how schools will be able to access the Robots.

[EBSA and AV1 Robot Webinar 24/09/2025 3.30-5pm](#)

# Next meeting – F2F

## North

- 1<sup>st</sup> December 1:30pm-3:00pm: Alliance of Leading Learning Building (The Marches School)

## Central

- 2<sup>nd</sup> December 1:30pm-3:00pm: Shrewsbury Guildhall, Wilfred Owen room

## South

- 3<sup>rd</sup> December 1:30pm-3:00pm: William Brookes School

**[BOOK HERE](#)**

**Spring 2**– we are looking for venues to host (Central and South locations): please e-mail [EQA@shropshire.gov.uk](mailto:EQA@shropshire.gov.uk)

