



Shropshire
Council

SEND and Inclusion Network Meetings

Secondary/Post 16

7th May 2025

On today's agenda...

- The Marches Careers Hub
- MPFT – mental health support
- Barnardo's
- Kids
- Local Authority updates
- External services updates
- Health updates
- CPD opportunities
- Evaluation



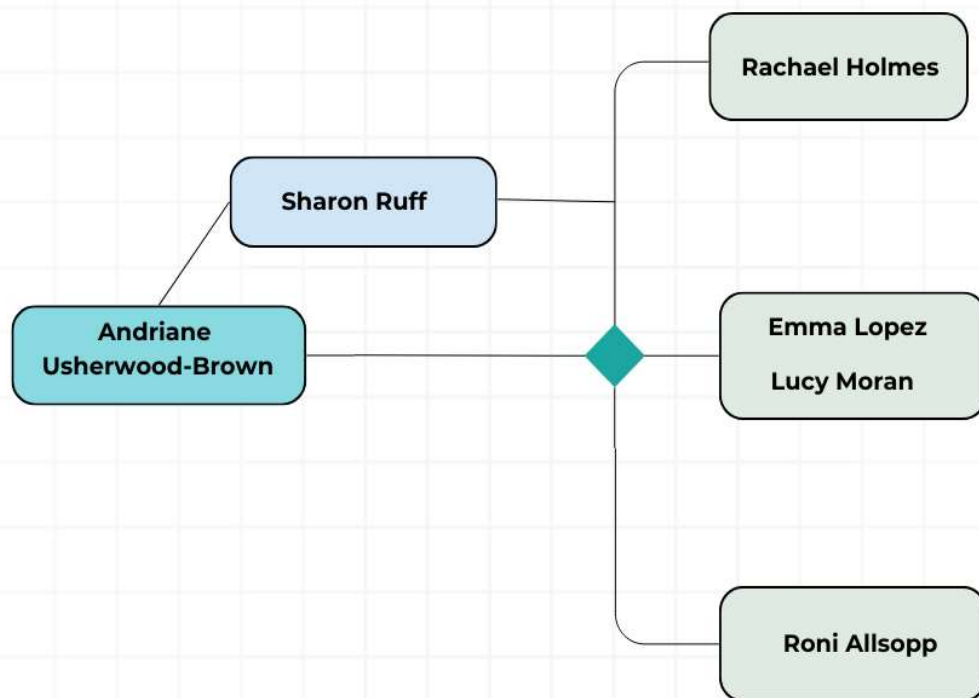


Shropshire
Council

Updates from the Marches Careers Hub – Sharon Ruff

SENCO Network Meeting – Shropshire Secondary Schools and Colleges





MARCHES CAREERS HUB

WHO WE ARE AND WHAT WE DO

- Supporting improvement in careers provision
- Connecting businesses to schools and colleges.



<p>Gatsby Benchmark</p> <p>1</p> <p>A stable careers programme</p>	<p>Gatsby Benchmark</p> <p>2</p> <p>Learning from labour market information</p>	<p>Gatsby Benchmark</p> <p>3</p> <p>Addressing every pupil's needs</p>	<p>Gatsby Benchmark</p> <p>4</p> <p>Linking curriculum learning to careers</p>
<p>Gatsby Benchmark</p> <p>5</p> <p>Encounters with employers & employees</p>	<p>Gatsby Benchmark</p> <p>6</p> <p>Experience of workplaces</p>	<p>Gatsby Benchmark</p> <p>7</p> <p>Encounters with further & higher education</p>	<p>Gatsby Benchmark</p> <p>8</p> <p>Personal guidance</p>

The national context for careers hub work

Gatsby next 10 – updates for 2024 and beyond

New Statutory Guidance due April 2025

Work Experience  Experiences of Workplaces

Careers teams in Schools – who's who?

Careers Lead

SLT Careers Lead (Strategic Careers Lead)

Careers Co-Ordinator(usually more administrative)

Multi-Academy Trust Careers Lead

Careers Adviser

Governor with responsibility for Careers

Careers Enterprise Co-ordinator (Careers Hub staff)

Enterprise Adviser (Careers Hub Volunteer)

Careers at the heart of education and leadership.

- **Whole School Approach – Careers as ‘everybody’s business’**
- **Joined-up working between careers staff and other key staff (especially SEND specialists)**
- **Careers related CPD for all staff**

Inclusion and impact for each and every young person

- Stronger definition of what a careers programme should look like
- Personalisation/differentiation of encounters and experiences
- Additional, Different or adapted information

Meaningful and varied encounters and experiences

With employers and employees, with further and higher education providers, and through experiences of the workplace

- **Emphasis on Meaningful:**
 - preparation and debrief
 - purpose
 - support – including additional or different support as needed
 - varied

Focusing on the USE of information and data.

- **NEET prevention**
- **Tailoring of support**

Engagement of Parents and Carers

- **Supporting parents to USE the information, advice and guidance that is offered.**

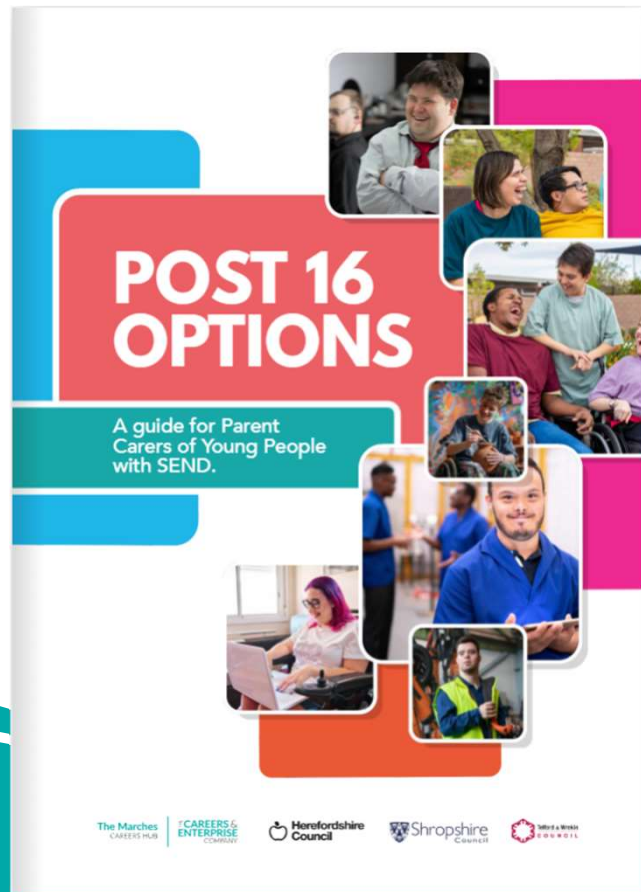
Tools and Resources

The Marches
CAREERS HUB

THE CAREERS &
ENTERPRISE
COMPANY

- **SEND/Inclusion Careers Hub Community of Practice**
Email sharon.ruff@shropshire.gov.uk to receive direct invites.
- **Funded careers hub projects**
- **Careers Live broadcasts**
- **Suite of Flipbook and pdf resources**
- **SEND in Mainstream Toolkit (Liverpool City Region Careers Hub)** [SEND in Mainstream Toolkit - Liverpool City Region Careers Hub](#)

Tools and resources continued



Contents

The Marches CAREERS HUB | CAREERS & ENTERPRISE COMPANY

- Page 3 - What is preparing for adulthood?
- Page 4 - What is Post-16 Education
- Page 5 - Preparing for Post-16 Transition
- Page 6 - What support is available?
- Page 7 - Getting the most out of EHCP review meetings
- Page 8 - What is a local offer?
- Page 9 - Transition from one setting to the next when your child has an EHCP
- Page 10 - What is a Study Programme?
- Page 11 - What types of Post-16 education & training are available?
- Page 12 - Types of Courses
- Page 13 - Types of Courses - SEND Routes Post-16
- Page 14 - A-levels
- Page 15 - Vocational Technical Qualifications (VTQs)
- Page 16 - T-Levels
- Page 17 - Foundation Courses
- Page 18 - Who offers foundation programmes near me?
- Page 19 - Independent Training Providers
- Page 20 - Specialist settings
- Page 21 - Specialist settings near me
- Page 22 - Specialist FE College / Specialise Post-16 Providers
- Page 23 - Specialist FE Colleges near me
- Page 24 - Supported Internships
- Page 25 - Who offers this near me?
- Page 26 - Apprenticeships
- Page 27 - Employment or Volunteering
- Page 28 - Supporting Career Planning
- Page 30 - Interview Questions
- Page 31 - Useful Websites

This guide was produced in partnership with RESOURCEFUL CAREERS

What is preparing for adulthood?

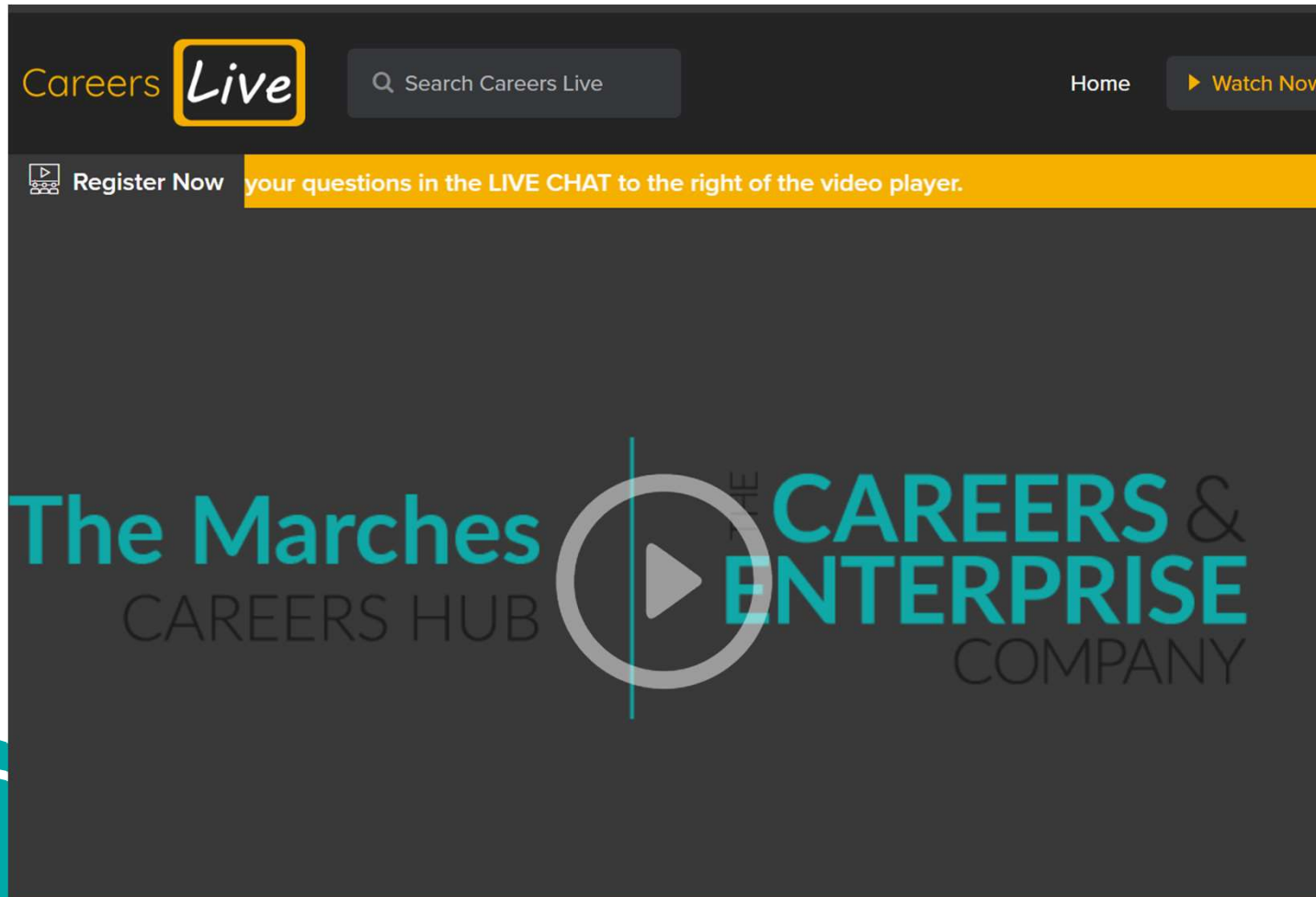
Young people with Special Educational Needs and/or Disabilities (SEND) are supported to think about what they want to do long-term from the earliest age possible. Working with families and professionals, **Herefordshire, Shropshire, and Telford & Wrekin Councils** encourage young people to think about the following:



Tools and resources continued

The Marches
CAREERS HUB

THE CAREERS &
ENTERPRISE
COMPANY



Broadcasts:

Apprenticeships

Labour Market Information for
parents

SEND post-16 Choices for
parent carers of young people
with SEND

Industry focused episodes

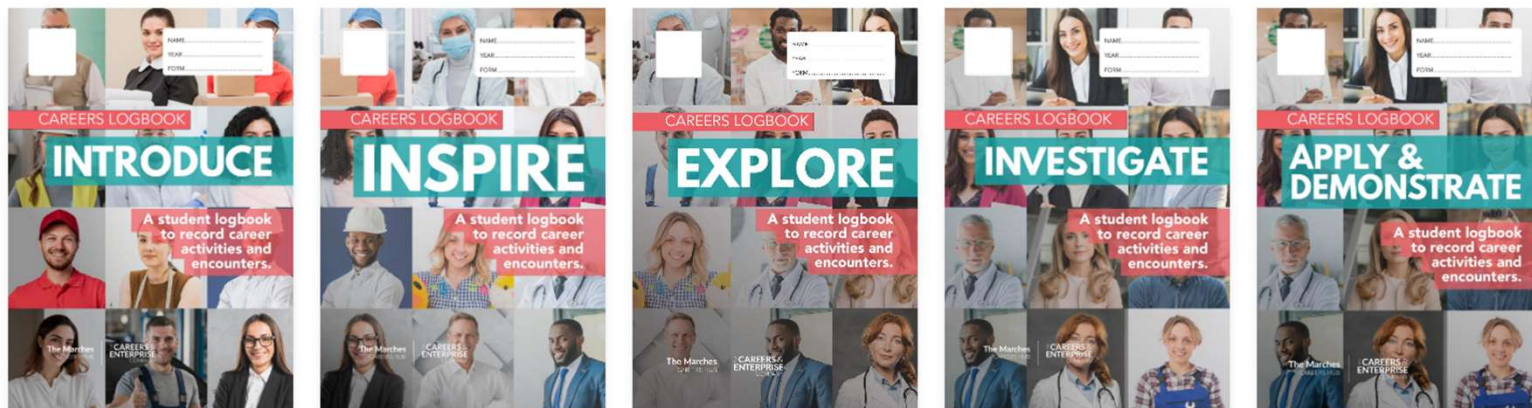
Essential Skills

Tools and resources continued

Careers Journey Logbook (KS3 - KS4)



Careers Journey Logbook (KS3 - KS4)



Tools and Resources continued.....

Free training from The Careers & Enterprise Company



- ★ Understand all pathways available for young people
- ★ Develop the confidence to have impactful careers conversations with young people
- ★ Access a range of resources to support young people



www.careersandenterprise.co.uk



@CareerEnt



The Careers & Enterprise Company

[The Careers & Enterprise Academy](#) | [The Careers and Enterprise Company](#)

[Events listing | Whole School SEND](#)

INCLUSIVE PATHWAYS

Supporting young people with SEND into employment

3 PART
WEBINAR
SERIES



FREE
SEND
CPD

✓ EFFECTIVE TRANSITION PLANNING

THURSDAY 7 MAY 2025, 3.30PM

✓ MODERN WORK EXPERIENCE OPPORTUNITIES

WEDNESDAY 1 OCTOBER 2025, 3.30PM

✓ BUILDING PARENTAL ENGAGEMENT

WEDNESDAY 4 MARCH 2026, 3.30PM

🔗 BOOK NOW:

www.wholeschoolsend.org.uk

Suitable for:
SENCOs, Inclusion leads, Careers leaders,
Work experience coordinators

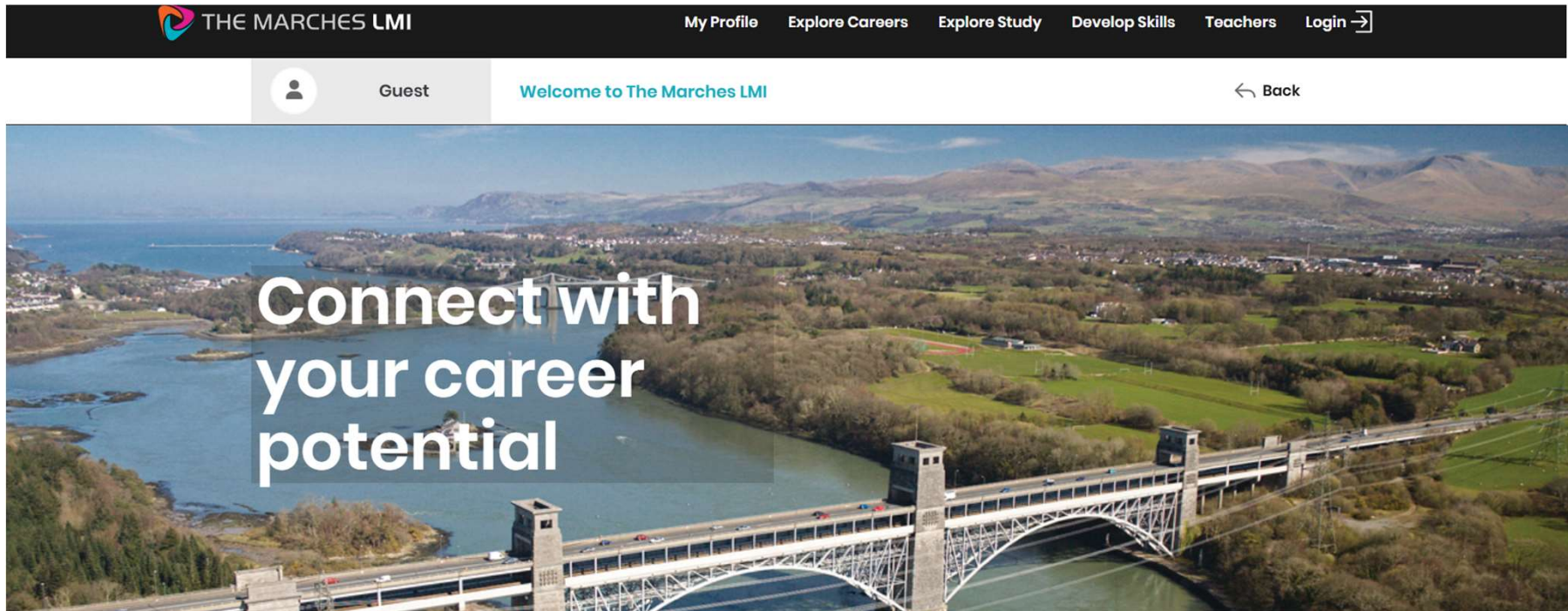
Funded by



Department
for Education

Tools and Resources continued.....

<https://themarches.startprofile.com/page/home-page>



How this platform supports you

The Marches LMI includes helpful information about jobs and career opportunities as well as information about local education and training provision.

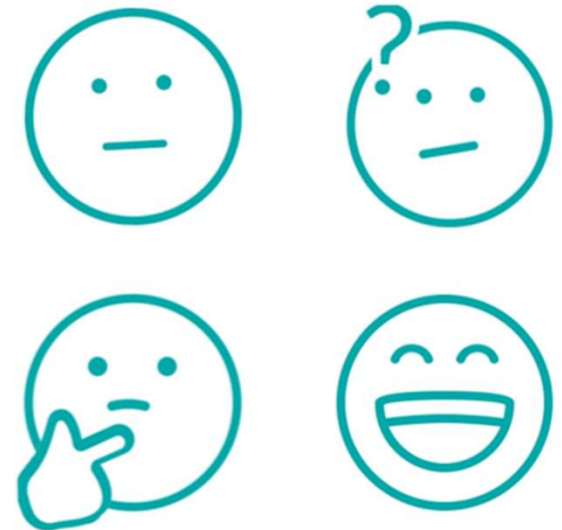
It will support you on your journey towards the world of work, helping you make informed choices about study options and be employment ready.

Tools and Resources continued.....

The Future Skills Questionnaire is a set of questions that have been designed for young people in schools and colleges to help you think about your skills, strengths and what you might like to do in the future.



[FSQ Learner engagement animation](#)



The last word.....

SEND/Inclusion Careers Hub Community of Practice

- 14th May
- 18th June

Thank You



MPFT – Mental Health Support

Amy Jones and Danielle Haslam

MHST Provision – 3 Core Functions

Function 1	Function 1: to deliver evidence-based interventions for mild-to-moderate mental health issues.
Function 2	Function 2: support the senior mental health lead (where established) in each school or college to introduce or develop whole school or college approach.
Function 3	Function 3: give timely advice to school and college staff and liaise with external specialist service to help children and young people to get the right support and stay in education.

ST&W

We are operational
across all geographical
areas in STW

65 Primary Schools


23 Secondary Schools

Wave 12 expands the
provision into a further
7 secondary schools to
be fully operational in
Jan 26


Mainstream secondary
settings 18/20 in
Shropshire 12/15 in
Telford

Some of the Beeu MHST Current work plans


Annual visits: A rolling programme has been implemented to visit all schools to review of provision and engagement. Wave 10 and 12 schools have MOU's in place. MOU's are being introduced in all settings.



Co-production: 2 Senior Practitioners are leading the co-production work and there is practitioner representation from each team who are organising and working to implement co-production within MHST.



Training: Brain Buddies: emotional regulation group training (Growth of Group Menu & Provision)
Mental Health First Aid training will be delivered to all new recruits into MHST
Co-facilitating group work with TEH and Parenting Team.



Increased reviews and support Waiting list & allocations: The team managers have implemented fortnightly reviews with team leads.

Delivery of BeeU MHST service

01

Supporting 10 trainees through training is a commitment for a challenged workforce. 6 of the trainee's were attrition places meaning that 6 Band 5 roles were held for the duration of training.

02

Wave 12 workforce is integrated into the 5 existing teams as ST&W is geographically covered. Trainees this year are spread across 4 teams to support their training.

03

The delivery of WSCA through 24/25 was able to be continued as trainee's are able to deliver against WSCA more robustly during training than 1:1 LI-CBT interventions and our recent away day focussed on WSCA following the DfE feedback survey.

04

We will be committed to supporting both the annual and link worker visits to ensure we are engaging with our settings and ensuring that the MHST 3 core functions are being utilised fully in all settings and challenges and successes can be shared and worked on/celebrated.

Good News

All of our 10 trainees for 24-25 have passed their course and we have recruited the 4 trainees for 25-26 for Wave 12.

Recruitment: We have in the recruited 2x Band 6 Senior Practitioners starting end of March & April 25. 2 CWP's from Core will join us in MHST in March 25.

Two senior practitioners are due to qualify on the supervision course

We have a new Band 7 Team Manager starting with us in June 25.

We are working on Job Descriptions and will be seeking to recruit 3 Assistant EMHP's

Two senior practitioners are due to qualify on the supervision course

Continued focus on MHST delivery

The continued focus on school engagement through the annual visit, signing up to the MOU and focus on supporting

Future waves of MHST will be funded differently and there are plans for a Wave 14 in ST&W but no confirmation yet about implementation.

We no longer have a regional DfE contact and there will be now national oversight.

Regular engagement through the collaboration network to ensure consistent delivery of MHST regionally.

Regular engagement with UoD to ensure close working with regard to trainee's and post grad courses e.g: Supervision Course



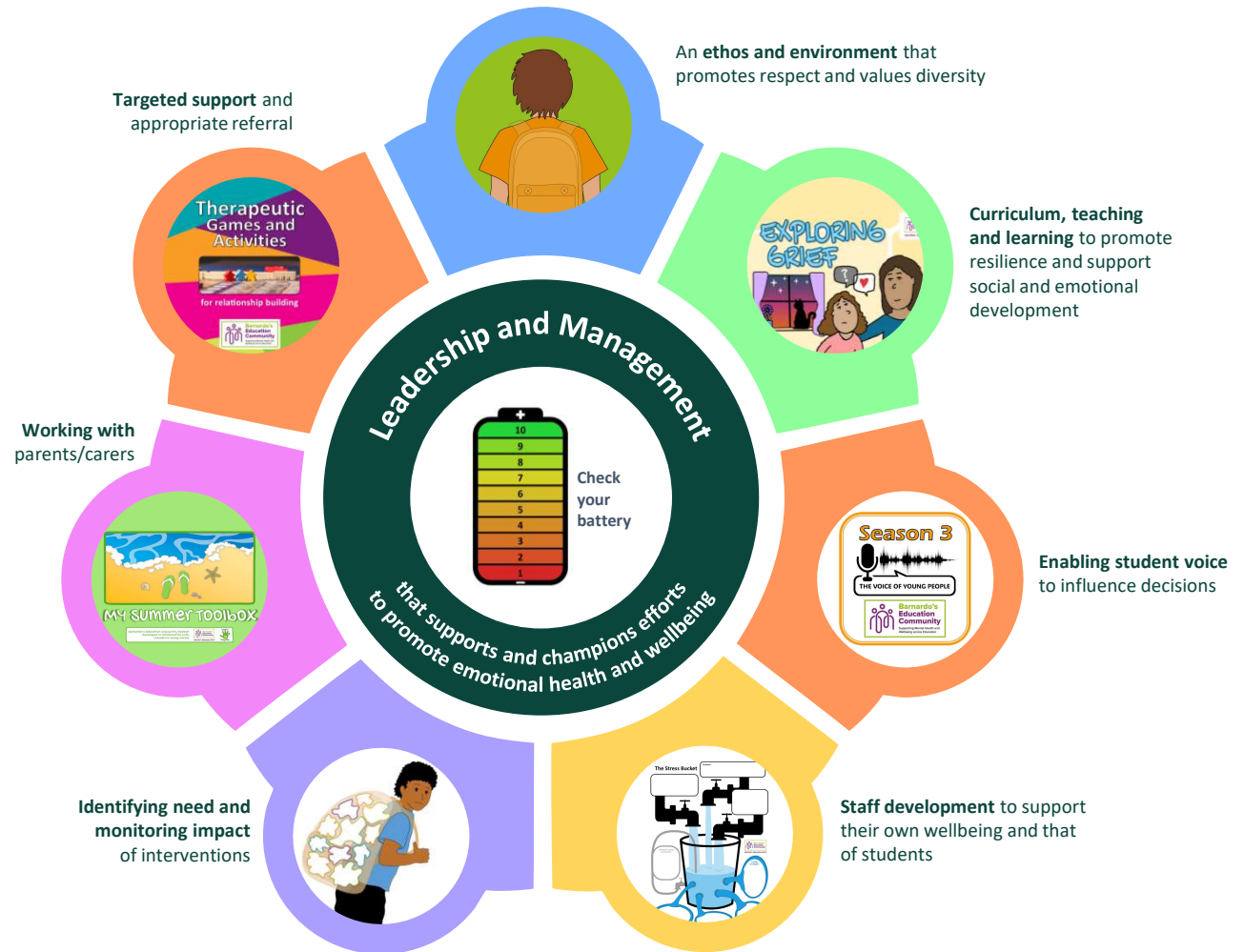
Shropshire
Council

Barnardo's

Marie Thomas

Barnardo's Education Community

- www.educators-barnardos.org.uk
- The aim of BEC is to improve the mental health and wellbeing of babies, children and young people, and the education staff that support them, through the provision of high quality CPD, training and resources.



Whole School Approach element	BEC Offer
Leadership and Management that supports and champions efforts to promote emotional health and wellbeing	Taking Care of People You Lead 3 interconnected sessions for middle and senior leadership: Session 1 (You) People are supported to manage their own mental health and wellbeing; Session 2 (Others) People are supported to recognise influences on others mental health and wellbeing; Session 3 (Culture) People are supported to consider the impact ethos and culture have on mental health and wellbeing.
An ethos and environment that promotes respect and values diversity	All packages but particular emphasis on The Invisible Backpack Package , which focuses on the importance of working in a trauma-informed and relational way in education establishments. The backpack metaphor is used to explore underlying factors impacting on behaviour including undiagnosed and diagnosed Special Educational Needs and Disabilities.
Curriculum, teaching and learning to promote resilience and support social and emotional development	We have a range of Resources , on specific themes such as the Exploring Grief booklet as well as more general wellbeing strategies.
Enabling student voice to influence decisions	Series 3 of our Podcast is focused on hearing the voice of children and young people with episodes on eating disorders and transitioning to university, with more to come!
Staff development to support their own well-being and that of students	BEC offers a range of Continuing Professional Development (CPD) for staff. Staff Wellbeing: Our Spaces for Wellbeing programme has a range of recordings and activities, such as the Stress Bucket, that can be used in staff meetings and individually. The Layered Learning CPD Packages provide an opportunity to build upon existing knowledge. Our latest training is on Emotionally Based School Avoidance . More dates coming soon!
Identifying need and monitoring impact of interventions	Articles, Blogs and Wakelets as well as training such as the Invisible Backpack Package support staff in identifying needs.
Working with parents and carers	Booklets , such as the Coping Toolbox, have been designed for children, young people, and their parents/carers to use during the Summer holidays.
Targeted support and appropriate referrals	Our posters, activities and booklets , such as the one on Therapeutic Games , support staff to undertake targeted support with individuals and groups as well as make appropriate referrals as needed.

Leadership and Management CPD - Taking Care of People You Lead

We asked attendees 'What worked best for you today? What will you be taking away?'

'It's good to chat with other professionals and see that we are all facing the same challenges, I like that the sessions challenge how you think about situations and be more reflective... I will be putting this into practice.' - Early Years Leader

'Resources were brilliant, group chat was really helpful. Session leaders were all fabulous and knowledgeable.' SENCo

'Time to think and reflect on staff health and wellbeing - to look at the various strands, look at the tools available and think how I can use them. I actually have a plan now of how to move things forward.' - Middle Leader

Session 1 (You)

54% increase in people rating their **awareness of personal wellbeing** as high. (46% before vs 100% after)

91% said they were highly likely to use what they have learned in the future.

Session 2 (Others)

63% increase in people feeling confident in being able to **support their colleagues and manage their health and wellbeing**. (20% before vs 83% after)

93% said they were highly likely to use what they have learned in the future.

Session 3 (Culture)

64% increase in people feeling confident that they were **creating a positive culture for all around health and wellbeing**. (15% before vs 79% after)

93% said they were highly likely to use what they have learned in the future.

Ethos and Environment

Invisible Backpack Package

'This training has been exceptional - thank you! (It was) relevant to all levels of staff. Essential for supporting the children in our setting.'

Headteacher - attendee

Outcomes:

- **88% of attendees reported an improvement in their knowledge and understanding** of a relational approach, the invisible backpack metaphor, and research/evidence relating to the impact of early relationships and childhood experiences (Part 1)

Staff Development

Layered Learning CPD Package - Self-Harm and Suicidal Behaviours in CYP

'Excellent delivery by trainers, very knowledgeable and approachable. Supported all learners. (Encouraged all to participate)' - attendee

Outcomes:

- BEFORE the training **16.67%** of attendees classed their knowledge and awareness as very good and above.
- AFTERWARDS this rose to **87.26%** representing an **increase of 70.59%**.



Barnardo's Education Community

Supporting Mental Health and
Wellbeing across Education

Website: www.educators-barnardos.org.uk

Email: becommunity@barnardos.org.uk

X: [@BarnardosEduCom](https://twitter.com/BarnardosEduCom)

→ carly.goodwin@barnardos.org.uk

→ lucy.kuipers@barnardos.org.uk

→ marie.thomas@barnardos.org.uk

Barnardo House, Tanners Lane, Barkingside,
Ilford, Essex IG6 1QG | Tel: 020 8550 8822

Barnardo's Registered Charity Nos.216250 and SC037605 24413AM23



**Changing childhoods.
Changing lives.**

Neurodiversity support programmes

Cygnets Autism Parenting Support

For parents & carers of children with autism /neurodiversity aged 3-18 (pre, post or possible diagnosis), delivered over seven weeks.

Parent Factor ADHD Support

A parenting programme for parents & carers of children with ADHD aged 3 - 16 years (pre, post or possible diagnosis), delivered over eight weeks.

The aims of Cygnets are to:

- Increase parents' knowledge of autism and its characteristics.
- Provide insight into how it feels to be a child with autism.
- Equip parents with strategies to support their child's sensory needs.
- Enhance parents' understanding of how to support their child's communication.
- Develop parents' understanding of behaviour and the reasons behind it.
- Offer practical advice on promoting positive behaviour and emotional well-being.

Additional sessions available.

- Sleep
- Supporting Siblings
- Puberty, sexual wellbeing & relationships

The aims of Parent Factor are to:

- To increase parents' knowledge of ADHD and its treatment.
- To give parents insight into how it feels to be a child with ADHD.
- To give parents advice on how to promote a more positive relationship with their child.
- To educate parents on strategies for effective behaviour management.

Both programmes include.

- 2 facilitators
- 1:1 time in/around the sessions for parents, if required
- Bespoke Padlet of follow-up resources
- Certificate of completion
- Evaluation and reach data
- Preparation time and evaluation
- Licenses and access to online materials/resources for parents

For more information, costs or to discuss a bespoke offer please contact:

Sarah Trubody – Virtual Family Space
Programme Manager
sarah.trubody@barnardos.org.uk



Barnardo House, Tanners Lane, Barkingside,
Ilford, Essex IG6 1QG | Tel: 020 8550 8822

Barnardo's Registered Charity Nos.216250 and SC037605 24413AM23

BARNARDOS



VIRTUAL FAMILY SPACE

Barnardo's Registered Charity Nos.216250 and SC037605 25713mw25



**Changing childhoods.
Changing lives.**



Shropshire
Council

Kids

Nicola King/Dawn Lewis

Kids

- As you may be aware, the Shropshire Autism Support contract has been transferred from Autism West Midlands to Kids. Here is a link to our website where further information and a referral form can be accessed: [Shropshire Universal Autism Support Service - Kids](#)



Kids Disabled children say we can Registered Charity No. 276336

Shropshire Universal Autism Support Service

Our free service will offer bespoke workshops covering the following areas:

- Neurodiversity (Specifically Autism, ADHD and Demand Avoidance)
- Girls and the Autistic Spectrum, Demand Avoidance, masking
- Sleep
- EBSA

Kids Family Support

Healthy Parent Carer programme is designed to reinforce parent carers' resilience and improve health and wellbeing among parents of children with additional needs and disabilities through:

- Promoting greater empowerment, resilience and confidence of parent carers;
- Taking small steps that are associated with better health and wellbeing;
- Encouraging setting achievable goals and taking a problem-solving approach

Riding the Rapids programme to support parent carers' understanding of behaviour and implement support strategies.

- To understand their child's behaviour in the context of their additional needs, and apply strategies to support positive behaviours
- Develop stress management strategies and confidence in managing their child's behaviour
- Collaboration to develop tools they can take with them and continue to apply once the intervention is complete

Further Support

- Coffee mornings
- Drop-in sessions
- One-to-one support
- Child/young person 'understanding me' group sessions

Contact Us:
Phone: (01743) 646906
Email: kids@shropshirekids.org.uk
Web: kids.org.uk/shropshire-universal-autism-support-service



Kids

Disabled children
say we can

Shropshire Autism
Support Service –
Update
May 2025





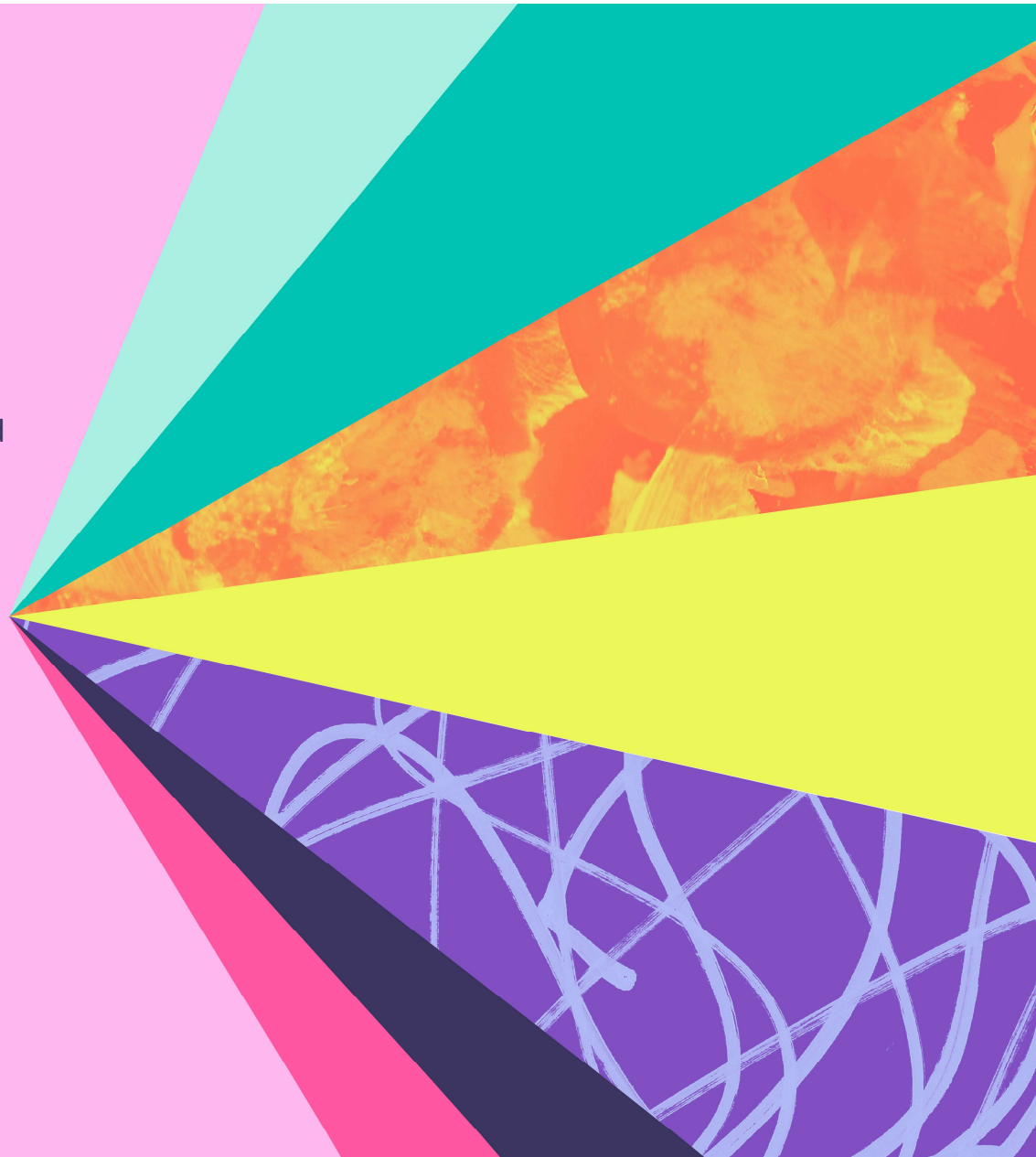
Introduction to Kids...

Kids is on a mission to create a world where all kinds of children and young people have all kinds of opportunities. Creating life-changing opportunities by providing a wide range of support.

- From early years into adulthood.
- Learning and development.
- Play schemes
- Adventure playgrounds and youth groups. Parent support and mediation.
- Social connections and emotional wellbeing.

When the world blocks children and young people with special educational needs and disabilities,

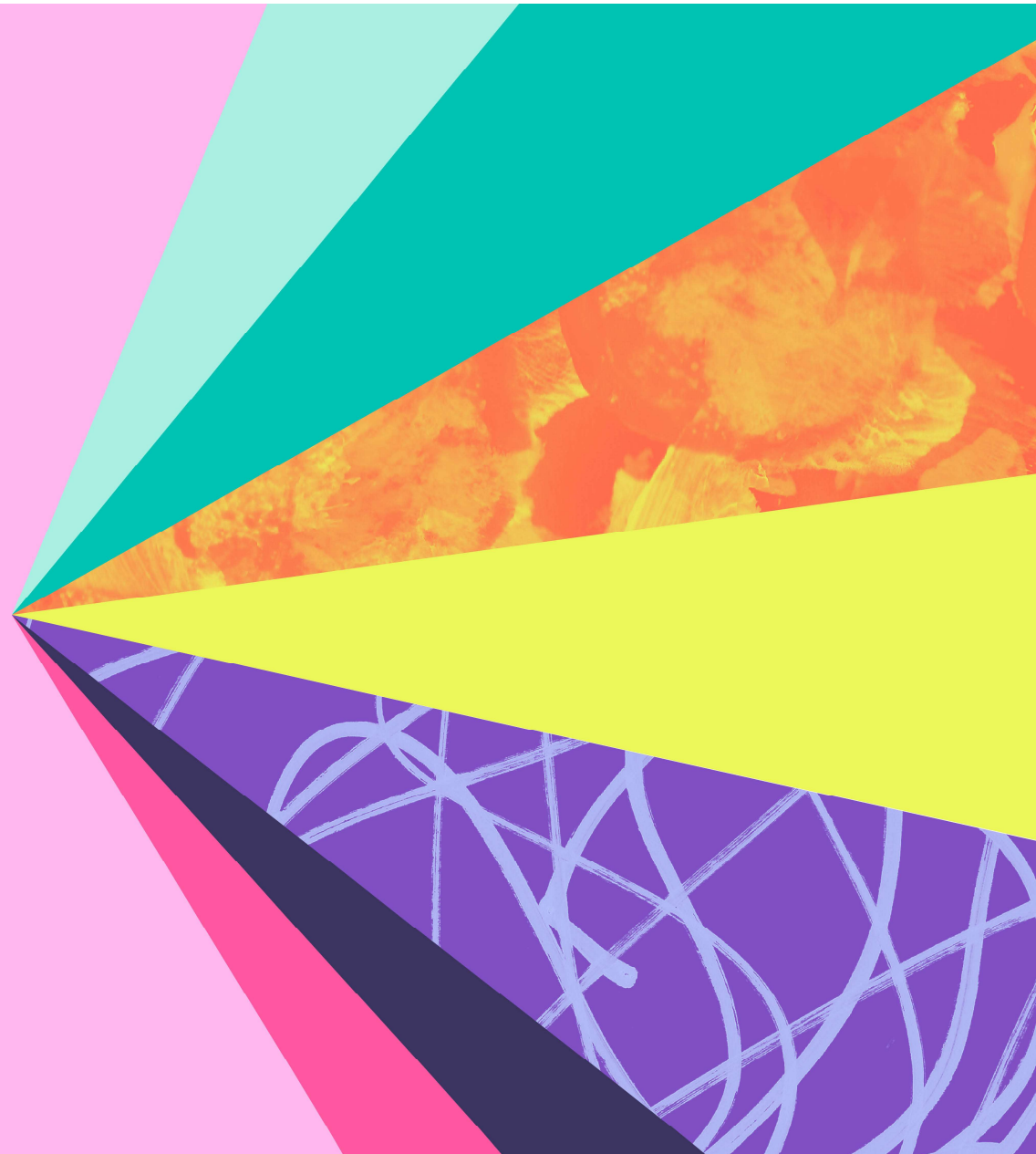
Kids speaks up.





Introduction to Kids...

- We are a national charity established in 1970
- Our target is to support 50,000 service-users in 2024/2025
- We have 62 Unique projects across the UK – in person support services and innovative online support hubs and workshops





Disabled children
say we can

Kids will be offering the following support to families:

The Healthy Parent Carers programme aims to improve health and wellbeing among parents of children with additional needs and disabilities through:

- **Promoting greater empowerment, resilience and confidence of parent carers;**





Disabled children
say we can

Kids will be offering the following support to families:

Riding the Rapids'

The programme is designed to support parent carers' understanding of behaviour and implement support strategies.

The course enables parents to understand their child's behaviour in the context of their additional needs, and apply strategies to support positive behaviours.

It also helps parents to develop stress management strategies and confidence in managing their child's behaviour. The course is collaborative, so that parents develop tools they can take with them and continue to apply once the intervention is complete.



Kids

Disabled children
say we can

Kids will be offering the following support to families:

Bespoke workshops that cover:

- ASD Vs ADHD (3 hours)
- Neurodiversity (Specifically Autism, ADHD and Demand Avoidance)
- Girls and the Autistic Spectrum
- Demand Avoidance
- Sleep
- EBSA



Kids

Disabled children
say we can

Coming Up in May/June:

Healthy Parent Carer Programme

Online for parent carers to enhance health & wellbeing.

Monday 12th May 10-1pm for six weeks

Coffee and Connect

Tuesday 20th Shrewsbury Library 10-11.30am



Kids

Disabled children
say we can

We will also be:

- Running taster sessions and drop ins
- Child/young person 'Understanding me' group sessions
- One to one support

For more details check out our website.

Web: kids.org.uk/shropshire-universal-autism-support-service





How to refer into the service:

Parent/carers can complete our online referral form, via the link below:

[Shropshire Universal Autism Support Service - Kids](#)

How to Contact Us:

Phone: (01743) 644506

Email: kids.shropshire@kids.org.uk

Web: kids.org.uk/shropshire-universal-autism-support-service



Shropshire Universal Autism Support Service

Our free service will offer bespoke workshops covering the following areas:

- Neurodiversity (Specifically Autism, ADHD and Demand Avoidance)
- Girls and the Autistic Spectrum, Demand Avoidance, masking
- Sleep
- EBSA

Kids Family Support

'**Healthy Parent Carer**' programme is designed to reinforce parent carers' resilience and improve health and wellbeing among parents of children with additional needs and disabilities through:

- Promoting greater empowerment, resilience and confidence of parent carers;
- Taking small steps that are associated with better health and wellbeing;
- Encouraging setting achievable goals and taking a problem-solving approach



'**Riding the Rapids**' programme to support parent carers' understanding of behaviour and implement support strategies.

- To understand their child's behaviour in the context of their additional needs, and apply strategies to support positive behaviours
- Develop stress management strategies and confidence in managing their child's behaviour
- Collaboration to develop tools they can take with them and continue to apply once the intervention is complete

Further Support

- Coffee mornings
- Drop-in sessions
- One-to-one support
- Child/young person 'Understanding me' group sessions

Contact Us:

Phone: (01743) 644506

Email: kids.shropshire@kids.org.uk

Web: kids.org.uk/shropshire-universal-autism-support-service





Shropshire
Council

Updates from the Local Authority

SEND and Inclusion Comms



SEND and inclusion newsletter

[Home](#) > [The SEND local offer](#) > [Practitioners](#) > SEND and inclusion newsletter

The local authority education quality advisers for SEND and AP produce a half termly newsletter for schools and settings which is aimed at practitioners and professionals who work with children and young people with SEND in Shropshire.

All past and current newsletters can now be found on the [Shropshire Learning Gateway](#).

In order to improve the timeliness in which we can share information with you and to keep information for schools in one place, we are further developing the Shropshire Learning Gateway (SLG).

- *All information for SENCOs and schools that relates to inclusive practice, training and resources is moving over to the SLG.*
- *CPD opportunities are now all together on a dedicated CPD page—click [HERE](#).*
- *Inclusive Practice information for practitioners, including newsletters, slides from network meetings, resources and GSP paperwork can be found in a new Inclusive Practice section—click [HERE](#).*
- *All information relating to statutory SEND processes (ECHNAs, EHCPs and Annual Reviews) will remain on the Local Offer so that it can be easily accessed by parent carers.*

The Local Offer will remain as a central point of information for all things SEND and you will be able to link to all information from the Local Offer but for ease of updating, the SLG will host the main content for practitioners.

If you have any suggestions for online content you would like to see made available for practitioners or for parent carers, please e-mail us: EQA@shropshire.gov.uk



Newsletter Delivery — *subscribe now!*

We are shortly moving to using the GovDelivery system for the SEND and Inclusion newsletter so that it can be delivered direct to your inbox. **We therefore need to ensure we have your correct e-mail address.**

Please complete the following MS Form as soon as possible so that we can add you to the mailing list:

<https://forms.office.com/Pages/ResponsePage.aspx?id=ETDBti03i0O8gmfkx5ZuiaazIzIIUHZPgyIWnpSskWxUOEhJUUtJU0pLTDM0MFITUUw5NEtMNTM1Vi4u>

A link to the newsletter will continue to be added to the Inclusive Practice pages of the SLG so you will be able to view and download it if you don't receive the e-mail.



Shropshire Learning Gateway

- Links for:
 - CPD [SEND and Inclusion | Shropshire Learning Gateway](#)
 - Newsletters [SEND and Inclusion Newsletter | Shropshire Learning Gateway](#)
 - Network slides [Slides and handouts - past meetings | Shropshire Learning Gateway](#)

Can now be found on the SLG [Inclusive practice | Shropshire Learning Gateway](#).

You will be directed to the SLG if you find yourself on the Local Offer.



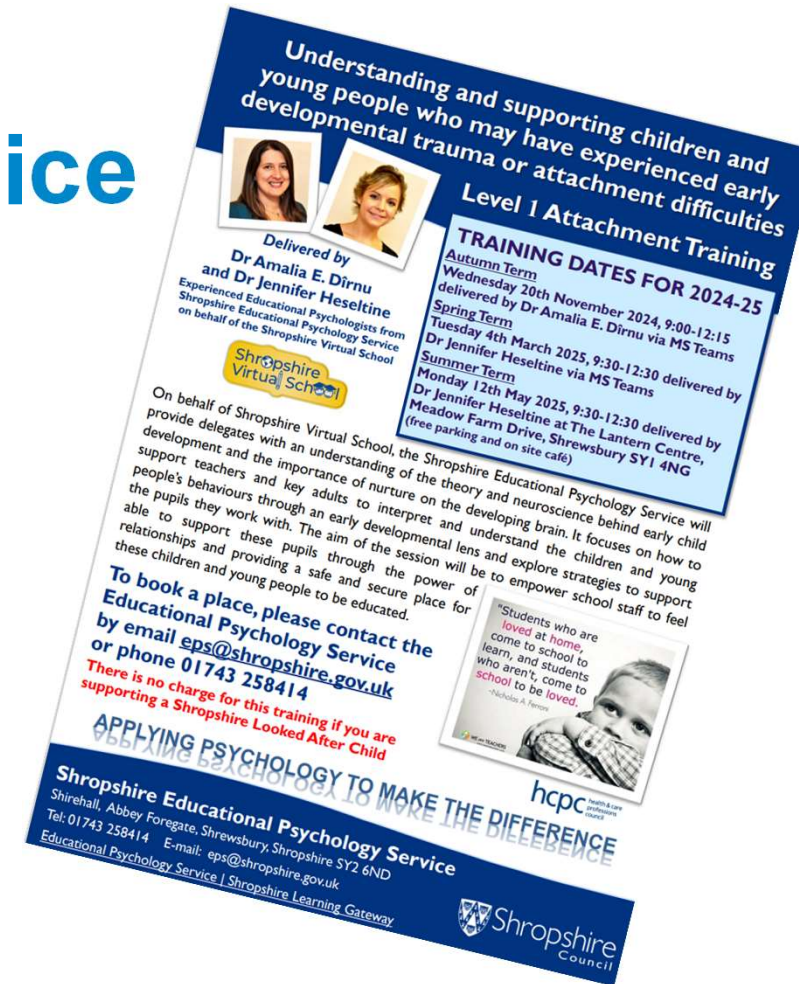
The local authority education quality advisers for SEND and AP produce a half termly newsletter for schools and settings which is aimed at practitioners and professionals who work with children and young people with SEND in Shropshire.

All past and current newsletters can now be found on the [Shropshire Learning Gateway](#).

Educational Psychology Service

Level 1 Attachment Training

- There are places available on the Level 1 Attachment training on Monday 12th May face to face at the Lantern Centre from 9:30 until 12:30 delivered by Dr Jennifer Heseltine. This training is **free** for staff members who are supporting Shropshire CLA within their settings.
- For more details, please see the flyer – click [HERE](#).
- To book a place, please e-mail eps@shropshire.gov.uk.



Understanding and supporting children and young people who may have experienced early developmental trauma or attachment difficulties

Level 1 Attachment Training

TRAINING DATES FOR 2024-25

Autumn Term
Wednesday 20th November 2024, 9:00-12:15 delivered by Dr Amalia E. Dirnu via MS Teams

Spring Term
Tuesday 4th March 2025, 9:30-12:30 delivered by Dr Jennifer Heseltine via MS Teams

Summer Term
Monday 12th May 2025, 9:30-12:30 delivered by Dr Jennifer Heseltine at The Lantern Centre, Meadow Farm Drive, Shrewsbury SY1 4NG (free parking and on site cafe)

Delivered by
Dr Amalia E. Dirnu
and **Dr Jennifer Heseltine**
Experienced Educational Psychologists from Shropshire Educational Psychology Service on behalf of the Shropshire Virtual School

Shropshire Virtual School

On behalf of Shropshire Virtual School, the Shropshire Educational Psychology Service will provide delegates with an understanding of the theory and neuroscience behind early child development and the importance of nurture on the developing brain. It focuses on how to support teachers and key adults to interpret and understand the children and young people's behaviours through an early developmental lens and explore strategies to support the pupils they work with. The aim of the session will be to empower school staff to feel able to support these pupils through the power of relationships and providing a safe and secure place for these children and young people to be educated.

To book a place, please contact the Educational Psychology Service by email eps@shropshire.gov.uk or phone 01743 258414

There is no charge for this training if you are supporting a Shropshire Looked After Child

APPLYING PSYCHOLOGY TO MAKE THE DIFFERENCE

hpcp
Healthcare Professionals
Confidential
CPD

Shropshire Educational Psychology Service
Shirehall, Abbey Foregate, Shrewsbury, Shropshire SY2 6ND
Tel: 01743 258414 E-mail: eps@shropshire.gov.uk
Educational Psychology Service | Shropshire Learning Gateway

Shropshire Council

"Students who are loved at home, come to school to learn, and students who aren't, come to school to be loved."
-Nicholas A. Ferris



Updates from external services

Kooth



This Mental Health Awareness Week, Kooth is offering free webinars for education professionals. If you work with young people and would like to learn more about Kooth and how we support children and young people's mental health, we'd love for you to join us on the **14th May**.

These sessions will provide a clear overview of our services and how we can help the young people you work with access free, safe, and anonymous support.

- Sign up [here](#) for 14th May 1pm



Kooth

Shropshire, Telford & Wrekin awareness videos:

[Children and young people](#)

[Professionals](#)

- [Parents and carers](#)

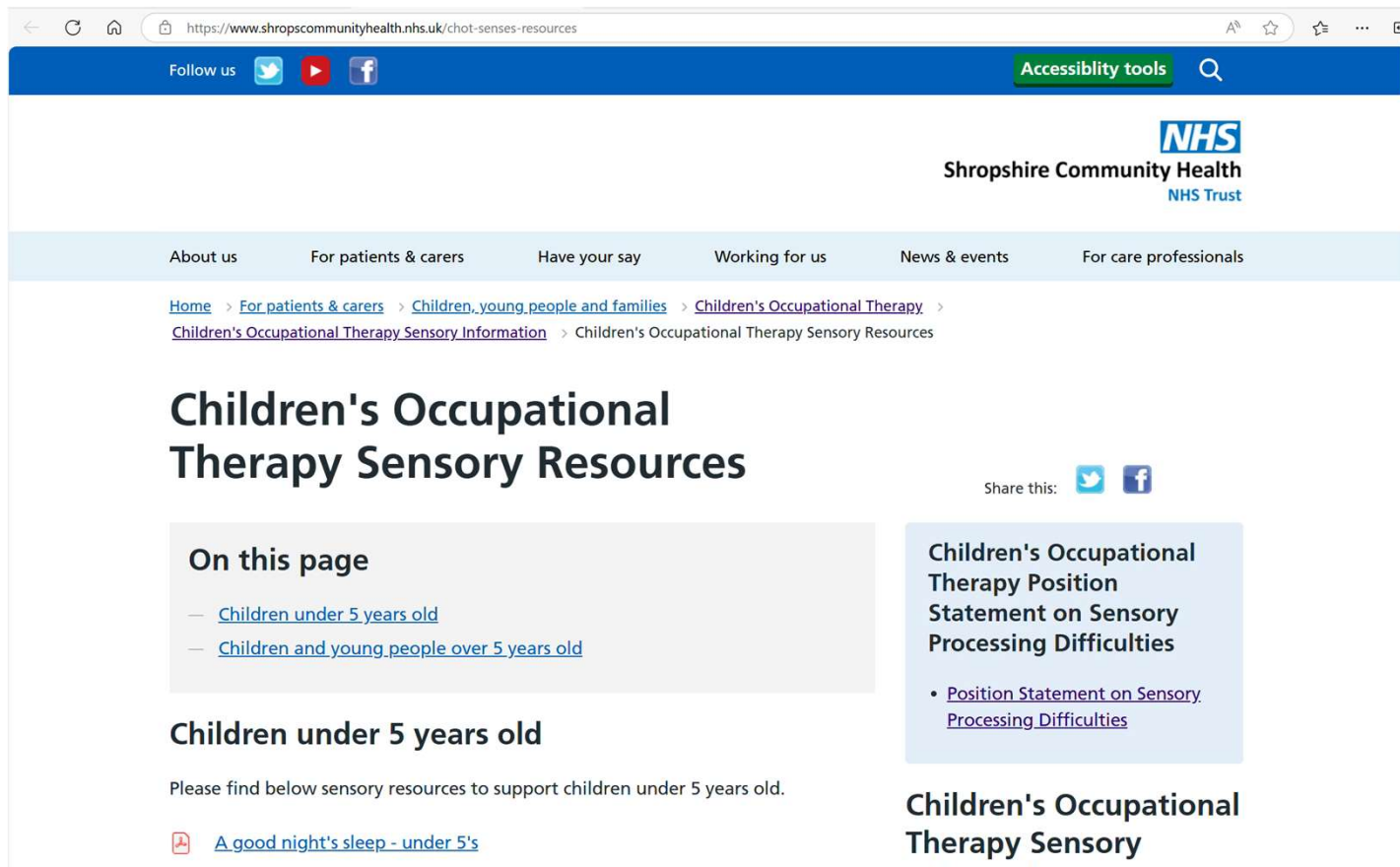







Shropshire
Council


Updates from Health

Occupational Therapy



https://www.shropcommunityhealth.nhs.uk/cho-ot-senses-resources

Follow us   



Accessibility tools 

NHS
Shropshire Community Health
NHS Trust

About us For patients & carers Have your say Working for us News & events For care professionals

Home > For patients & carers > Children, young people and families > Children's Occupational Therapy > Children's Occupational Therapy Sensory Information > Children's Occupational Therapy Sensory Resources

Children's Occupational Therapy Sensory Resources


Share this:  

On this page

- [Children under 5 years old](#)
- [Children and young people over 5 years old](#)

Children under 5 years old

Please find below sensory resources to support children under 5 years old.

 [A good night's sleep - under 5's](#)

Children's Occupational Therapy Position Statement on Sensory Processing Difficulties

- [Position Statement on Sensory Processing Difficulties](#)

Children's Occupational Therapy Sensory

- The Occupational therapy Service have published their position statement re Sensory Processing Difficulties: [Children's Occupational Therapy Sensory Resources](#)

The Healthier Together website

[Healthier Together](#) provides advice for those caring for babies, children and young people in Shropshire and Telford. It provides consistent, accurate and trustworthy healthcare advice on common childhood illnesses for both physical and mental health, and information on long term conditions. It also provides details of where to seek help if required and national and local support services. All the information on the site is checked by clinicians, and local organisations and parent carers are involved in its content development.

There have been two recent additions to the website

- The support offer for Speech Language and Communication Needs - [Support for Speech, Language and Communication Needs \(SLCN\)](#)
- Signposting information for families whose children are waiting for a health assessment/appointment - [Support available while waiting for your appointment](#)

These new sections build on other recently developed sections such as the [Neurodiversity pages](#) which contain articles about common neurodivergent conditions and the Neurodiversity support offer.

[Support for neurodivergent children and their families](#)

- The Healthier Together website provides consistent, accurate and trustworthy healthcare advice for parents, carers, young people and professionals. All the information on the site is checked by clinicians, and local organisations and involves parent carers in its content development.

Bridging Gaps: SEND and Health Needs within Educational Settings

Thursday 12th June 2025
10.00am - 1.00pm

The focus of the webinar is on:

- Clinical interventions in educational settings
- Consideration of interrelationship between SEND, Health including Continuing Care and education
- Joint working and approaches to combined assessments/reviews
- Consideration of the statutory requirements in depicting health needs and interventions (education and home setting)

Why Attend?

- It will address varied approaches across the Midlands.
- It will help to improve collaboration and coordination between schools, SEND, and continuing care.
- It will share best practices to meet needs and avoid tribunals.

Who should attend:

- Continuing Care Leads/Managers
- 0-19 services and Provider Leaders
- SEND Leads Health/ DCOs
- SEND Leads Local Authority
- CYP Commissioners



Bridging Gaps: SEND and Health Needs within Educational Settings

Thursday 12th June 2025
10.00am - 1.00pm



The focus of the webinar is on:

- Clinical interventions in educational settings
- Consideration of interrelationship between SEND, Health including Continuing Care and education
- Joint working and approaches to combined assessments/reviews
- Consideration of the statutory requirements in depicting health needs and interventions (education and home setting)

Why Attend?

- It will address varied approaches across the Midlands.
- It will help to improve collaboration and coordination between schools, SEND, and continuing care.
- It will share best practices to meet needs and avoid tribunals.

Who should attend:

- Continuing Care Leads/Managers
- 0-19 services and Provider Leaders
- SEND Leads Health/ DCOs
- SEND Leads Local Authority
- CYP Commissioners

Key outcomes:

1. **Improved Collaboration:** Enhanced coordination between schools, SEND, and continuing care teams, leading to more effective interventions and support for children and young people.
2. **Shared Best Practices:** Dissemination of successful strategies and examples, such as the Joined-Up Derbyshire initiative, to inspire and guide other areas in developing their approaches.
3. **Increased Awareness:** Greater understanding of the challenges and opportunities within clinical interventions in educational settings, fostering a more informed and proactive approach.
4. **Plans:** beginning conversations and start to develop key actionable plans and next steps.
5. **Networking Opportunities:** Establishment of connections between key individuals and organisations, facilitating ongoing communication and collaboration beyond the session.
6. **Support for Local Approaches:** Strengthening local initiatives and approaches in the absence of national guidance, ensuring that each area can tailor solutions to their specific needs.

Interested in Attending?

To book a place, please follow the link below-
<https://forms.office.com/e/7PFK2a01Pz>

Please put a hold in your diary and an invite will be shared as soon as possible. Please share this invitation with relevant colleagues and contacts.

If you have any queries or questions, please contact Reborah.Ward27@nhs.net or michele.brooks1@nhs.net

Full article in weekly schools' e-mail

General reminders and links

- [Shropshire School Nurses](#)
- [Support for neurodivergent children and their families](#)
- [Support for Speech, Language and Communication Needs \(SLCN\)](#)
- [BeeU :: Midlands Partnership University NHS Foundation Trust](#)

Upcoming CPD

Date	Course Title	Venue	Cost	Booking Link
12th June 1-3pm	AET: Transitions in School	Shrewsbury Guildhall	£80	https://www.eventbrite.co.uk/e/1309698255739?aff=oddtcreator
11th July	Shropshire Inclusive Practice Conference	Shrewsbury Town	£35/£45	https://forms.office.com/e/k4jQa7f0F0 Shropshire Inclusive Practice Conference Poster July 2025 (V2)

INCLUSIVE PRACTICE CONFERENCE

Friday 11th July 2025



Headteachers, SLT and SENCOs - join us at Shropshire Council's Inclusive Practice Conference to celebrate and share examples of inclusion that will support you meet the needs of CYP with SEND in your schools and settings.



Key Note Speaker: Gary Aubin

Gary leads on a SEND School Improvement programme with Whole Education, supporting schools and Trusts to drive a whole-school approach to supporting pupils with SEND. He also sits on the Government's Curriculum and Assessment Review panel.

Workshops

Choose from a selection of workshops on topics such as EBSA, supporting pupils with neurodiversity, early language development, alternative provision, adaptive teaching and much more.



For more details and to reserve your place:
<https://forms.office.com/e/k4jQa7f0FO>



Shrewsbury Town Football Club
Montgomery Waters Meadow, Otley Road. SY2 6ST



We are delighted that Gary Aubin will be joining us at our conference and delivering our keynote speech.

Gary leads on a SEND School Improvement programme with Whole Education, supporting schools and Trusts to drive a whole-school approach to supporting pupils with SEND. Gary sits on the Government's Curriculum and Assessment Review panel.

Gary is the Education Endowment Foundation's SEND Associate. In this role, he has worked extensively on sharing the evidence base behind high-quality teaching for SEND, as well as advised on the development of the SENCO NPQ.

As a Consultant, Gary has spoken internationally, advised the BBC, written content for the National Institute of Teaching and given talks to hundreds of Trust, Local Authority and school audiences.

Gary Aubin is the author of The Lone SENDCO, a handbook of 300 questions and answers for busy SENDCOs, and The Parent's Guide to SEND. Gary led on SEND provision for a Multi Academy Trust of 10 primary and secondary schools for several years. He is a secondary teacher, former primary and secondary SENDCO and former secondary Head of Year. Gary also authors the SENDMattersUK blog.

And that's not all...

In addition to Gary's keynote address, there will be a number of **workshops** running throughout the day, covering a wide range of topics such as Emotionally Based School Avoidance, supporting early language development, curriculum design to support SEND, strategies for supporting neurodivergent learners, working with parent carers and much, much more.

The conference is aimed at Headteachers, Senior Leaders, SENCOs and Inclusion Leads and will focus on developing whole school approaches to inclusion that benefit all.

Further details to follow as workshops and guest speakers are finalised but you can book your place NOW by registering here: <https://forms.office.com/e/k4jQa7f0FO>

£35

for Shropshire schools
and settings

£45

for non-Shropshire
schools and settings

Next meeting

- There is no face to face network meeting in the second half of this term as we have the conference – *hope to see you all there!*

2025/2026

Autumn 1

- Secondary and Post 16 Online Network meeting, Wednesday 24th September
- 3.30pm-4.30pm via Teams
- Sign up via the link on the SLG soon: [CPD Schedule and Booking Information 2024-2025 | Shropshire Learning Gateway](#)

Autumn 2, Spring 2 and Summer 2 – we are looking for venues to host (North, Central and South locations): please e-mail EQA@shropshire.gov.uk

Network Meeting Evaluation

<https://forms.office.com/e/kEP0cZgUNF>

SEND and Inclusion Evaluation
Survey May 2025

