

# SEND and Inclusion Network Meetings

EYFS Phase  
8<sup>th</sup> May 2025



Please mute your mic  
when you join the  
meeting – thank you!

# On today's agenda...

- **Welcome and Introductions**
- **Updates from the EHCP Team**
  - ❖ *Claire Fellowes*
- **Education Access Service**
  - ❖ *Jo Smith*
- **Early Help SEND Drop-ins**
- **SEND and AP Change Programme**
- **CPD Opportunities**
- **Future meetings**



Please sign up for the SEND and inclusion newsletter for professionals and practitioners here:

[SEND and inclusion newsletter - CPD special, September 2025](#)

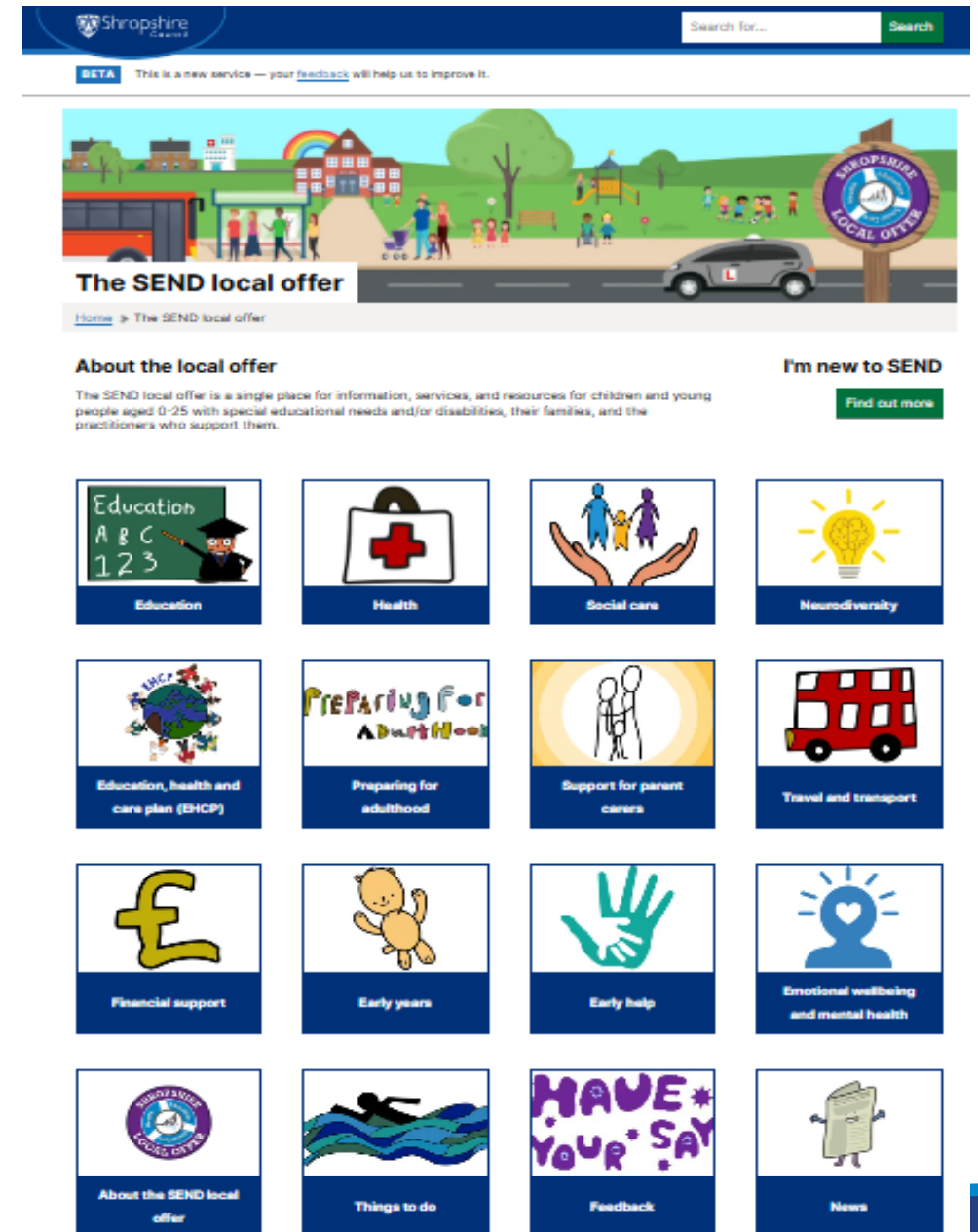
*Use the box on the right-hand side to subscribe to updates*

# Updates from the EHCP Team

# Shropshire Local Offer

## [The SEND local offer | Shropshire Council](#)

- Area covered:-
- Education
- Health
- Social care
- Neurodiversity
- EHCP
- Preparing for Adulthood
- Support for Parent/ Carers
- Travel and Transport
- Financial support
- Early Years
- Early Help
- Emotional Wellbeing and Mental Health

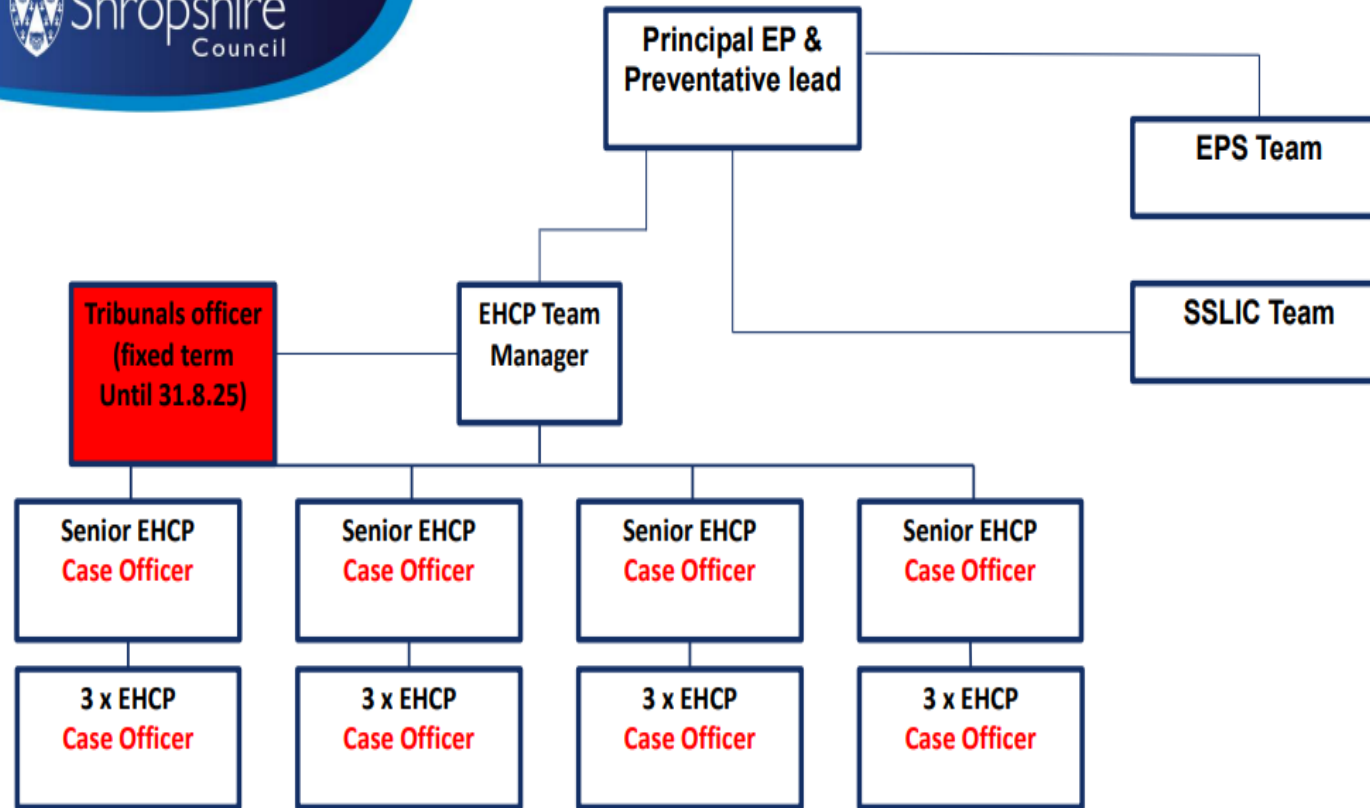


The screenshot shows the Shropshire Council website's 'The SEND local offer' page. At the top, there is a search bar and a 'Search' button. Below the search bar, a 'BETA' notice states: 'This is a new service — your feedback will help us to improve it.' The main header features a colorful illustration of a community scene with a bus, a car, a playground, and a sign that says 'SHROPSHIRE LOCAL OFFER'. Below the illustration, the page title 'The SEND local offer' is displayed, followed by a breadcrumb trail: 'Home > The SEND local offer'.

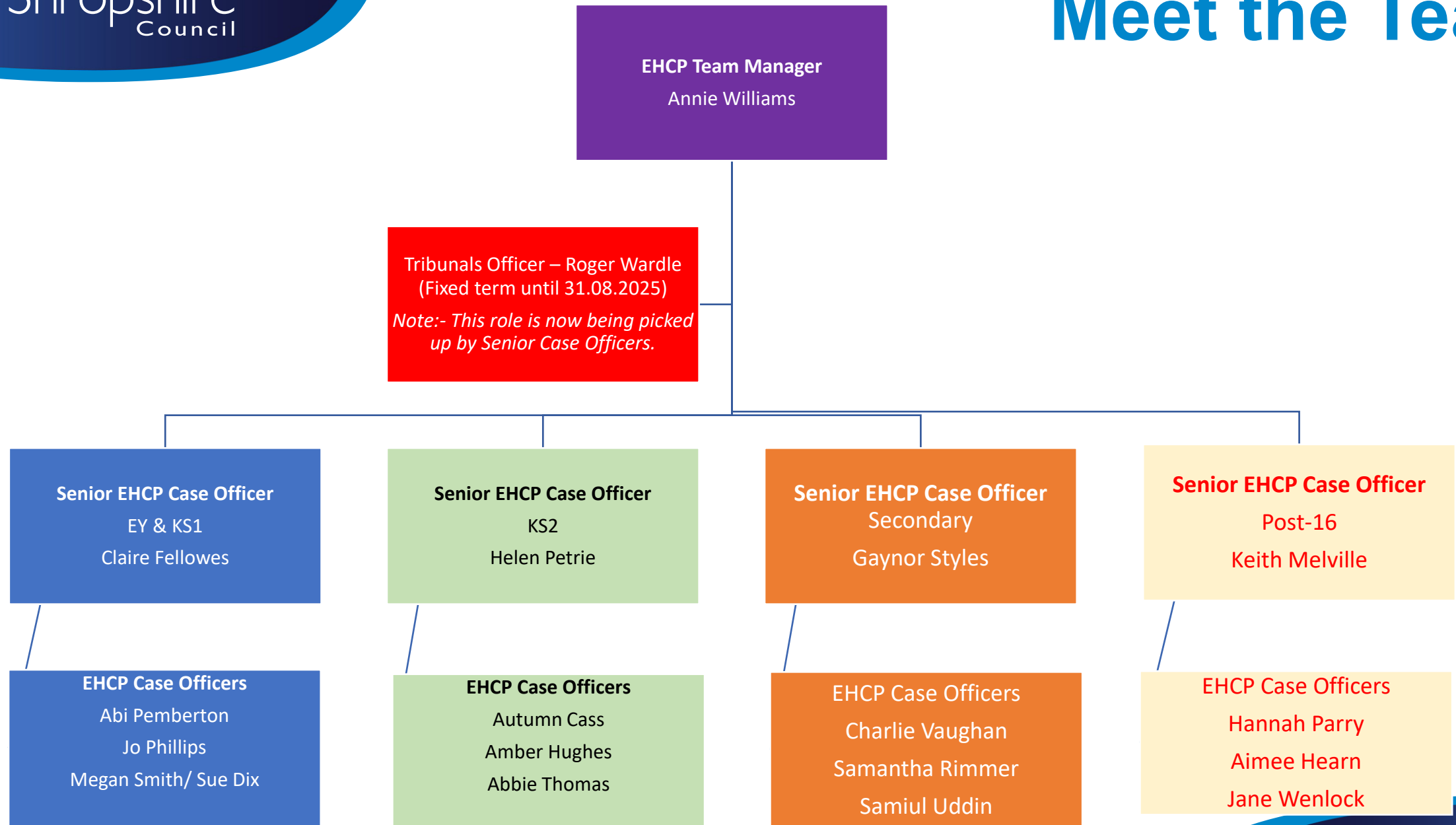
The main content area is divided into two columns. The left column is titled 'About the local offer' and contains the text: 'The SEND local offer is a single place for information, services, and resources for children and young people aged 0-25 with special educational needs and/or disabilities, their families, and the practitioners who support them.' The right column is titled 'I'm new to SEND' and includes a 'Find out more' button.

Below the text, there is a grid of 16 icons, each representing a different service or topic. The icons are arranged in four rows and four columns:

- Row 1: Education (greenboard with ABC 123), Health (first aid kit), Social care (hands holding people), Neurodiversity (lightbulb).
- Row 2: Education, health and care plan (EHCP) (globe with people), Preparing for adulthood (text 'PREPARING FOR Adulthood'), Support for parent carers (two figures), Travel and transport (red bus).
- Row 3: Financial support (£ symbol), Early years (baby), Early help (hand), Emotional wellbeing and mental health (person with heart).
- Row 4: About the SEND local offer (SEND logo), Things to do (person swimming), Feedback (text 'HAVE YOUR SAY'), News (envelope).



**Note – Role of Annual Review Recovery Team**



# **Early Years Team 0 to Year 2**

# Contact Details

- [Claire.fellowes@shropshire.gov.uk](mailto:Claire.fellowes@shropshire.gov.uk)
- [Abi.pemberton@shropshire.gov.uk](mailto:Abi.pemberton@shropshire.gov.uk)
- [Jo.phillips@shropshire.gov.uk](mailto:Jo.phillips@shropshire.gov.uk)
- [Meg.smith@shropshire.gov.uk](mailto:Meg.smith@shropshire.gov.uk)
- [Sue.dix@shropshire.gov.uk](mailto:Sue.dix@shropshire.gov.uk)

- EHCP Team email address [ehcpteam@shropshire.gov.uk](mailto:ehcpteam@shropshire.gov.uk)
- SEN Team Manager [annie.williams@shropshire.gov.uk](mailto:annie.williams@shropshire.gov.uk)

# Case Officer Allocations Early Years Team

EHCP Case Officer	Area of main responsibility	Case Allocation by home postcode for all other cases
Jo Phillips	North Shropshire	SY10, SY13, SY12, SY11, SY22, TF9, TF6, CW3, CW2, CW1, LL14
Megan Smith	North Shropshire	SY1, SY4
Abi Pemberton	South Shropshire	SY3, SY2, SY5, SY6, SY9, SY21, SY15, SY7, SY8
Sue Dix	South Shropshire	WV16, WV15, WV6, WV7, WV5, TF11, TF3, TF4, TF8, TF12, TF13, DY12, DY14, WR15 ( <i>Out of county</i> )

# Annual Reviews

## Key messages 25/26

- Phased transfer (-1) Annual Reviews should be submitted to the EHCP Team no later than **31<sup>st</sup> October 2025** and should lead to a finalised plan before 31<sup>st</sup> March 2026.
- Annual Review documentation must evidence the importance of:
  - PFA themes
  - Voice of the Young Person
  - Evidence to support onwards setting requests
  - Updates from other key professionals – where applicable, critical information required from Social Care/Health etc. SC/Health colleagues should be invited to attend the Annual Review – if their physical presence is not possible, they should submit an update report to be included with the schools Annual Review paperwork. **Sec 9.176 (CoP)** *‘The setting must seek advice and information about the young person prior to the meeting from all parties invited, and send any advice and information gathered to all those invited at least two weeks before the meeting.’*
- Settings have a responsibility to inform and update the EHCP Officer of changes to need or parental preference.
- Annual Review link (Local Offer) [EHCP annual reviews | Shropshire Council](#)

Please note that...

- Professionals reports often indicate the type of provision/intervention and strategies required.
- Think about the objective of the provision rather than the geography i.e. sensory work does not have to be done in the Sensory Room.
- Interventions do not have to be done outside the classroom.
- Interventions do not have to be delivered by solely support staff.
- Provision should be matched accurately to a young persons need as evidenced in professional reports and assessments rather than because it is an intervention that the school is already running/has staff trained in.
- Consider how the Young Person needs to develop their independence (PFA theme) as they grow older and prepare for Post 16 study. 1:1 does not mean the same person, 'attached' right next to the pupil at all times, forever.

# Welcome to the Education Access Service



# Who are we ?

- **The Education Access Service supports Shropshire Council in collaboration with schools and parents to meet their statutory obligations and duties placed upon them by successive education acts and childcare legislation.**
- **Our dedicated team of 28 highly skilled team members provide a range of services to Shropshire including**
  - **School Attendance and Education Welfare**
  - **Children Missing in Education, Elective home education and Child Employment**
  - **Inclusion Support – prevent exclusions and suspensions, 6<sup>th</sup> day provision, support with outreach and engagement with mainstream education.**

## Our Senior Leadership Team

### **Head of the Virtual School and Access to Education**

- Jo Kelly

### **Lead of Education Access**

- Jo Smith: Named Officer for Attendance

### **Officers**

- Adriana Coupe: Named Officer for EHE, CME and Inclusion Support lead.

### **Inclusion and AP Task Force Lead**

- Laura Goodall: Outreach and transition (AP to mainstream)

## What we ask of you

- If you know of a family who may need support for their child's transition to reception, we ask that you reach out to us for support at the earliest opportunity.
- Potentially our Outshine outreach offer may be able to support for an interim period of transition:
  - ❖ Inclusion Outreach offer (includes Occupational Therapy)
  - ❖ Integration and Engagement with mainstream
- Or our LA Attendance Officer may also be able to support with their transition if their attendance journey so far in your setting has been sporadic



## Elective Home Education

- If you know of a child whose parents are intending to electively home educate, can you let the team know.
- This allows us to make the necessary checks once they become statutory school age.



## Other avenues of support

- Under the Working Together statutory guidance issued in 2024, “support first” is key and it also maybe appropriate to consider if a wider Multi-Agency approach is needed for the family/ child with consideration for a referral with consent to the Integrated Panel.

### [Family Guide to Integration Consultation Panels](#)

- You can also consider FIS - which holds both local and national organisations and services for children, young people and families.

### [Information to help families in Shropshire - Shropshire Together Community Directory](#)

- The LA Attendance Officer role supports transition from your early year's settings into Reception – the named officer is Vicky Rodgers- [vicky.rodgers@shropshire.gov.uk](mailto:vicky.rodgers@shropshire.gov.uk)

# Updates from the Early Help Team

# EARLY HELP SEND MEET & CHAT FAMILY DROP-IN

CONNECTING FAMILIES WITH  
SUPPORT ACROSS SHROPSHIRE

**GREG MCALOON**  
EARLY HELP SEND OPERATIONAL LEAD



# Introduction to the Sessions

## **Purpose of Sessions**

Sessions provide a welcoming environment for families to ask questions and receive guidance about SEND.

## **Goals and Support**

The sessions aim to offer advice, facilitate service access, and foster open dialogue among parent carers and professionals.

## **Community Connection**

These events build a community-oriented approach to bridge families with SEND services and professionals.



## Autumn Term Dates & Locations

Date	Time	Location
23rd September	2-4pm	Raven House, Market Drayton
14th October	1-3pm	Bridgnorth Library
13th November	10-12pm	The Lantern, Shrewsbury
4th December	1-3pm	Oswestry Library

# What Support is Available

## **Multi-sector Professional Support**

Professionals from education, health, and social care are available to provide comprehensive advice, support and guidance to our families at the sessions.

## **Tailored Guidance and Advocacy**

Families will receive personalised advice on EHCPs, the local offer, mental health, and wellbeing tailored to individual needs.

## **Holistic and Flexible Approach**

Sessions are designed to be flexible and responsive, ensuring relevant support for every family's unique situation.

# Professionals Attending

## Confirmed for Raven House:

- Neurodiversity Practitioners
- Designated Clinical Officer for SEND
- EHCP Case Officer
- Early Help Play Practitioner
- KIDS Shropshire Autism Support
- SENDIASS
- Preparing for Adulthood Team
- Local Authority Attendance Officer
- Family Information Service (FIS)
- Early Help 0–5 Team
- Parent Carer Council (PACC)
- Shropshire HAF (Holiday Activities & Food)



# Parent Feedback & Data Gathering

## **Collecting Parent Feedback**

Feedback is collected via an online form accessible by QR code at each SEND session to engage parents effectively.

## **Shaping Future Sessions**

Parents suggest future topics and share experiences to help tailor sessions to better meet family needs.

## **Improving Support Services**

Collected data helps evaluate and improve the effectiveness of current SEND support services in Shropshire.

## **Community-Driven Approach**

Involving parents ensures sessions are responsive and reflect the community's needs and voices.



# Call to Action

## Encourage Attendance

Please actively encourage parent carers of children with SEND to attend the upcoming Meet & Chat sessions. These events offer a valuable opportunity for families to access support in a relaxed and welcoming environment.

## Share the Information

Distribute session details through your networks—schools, clinics, community groups, and social media, to ensure families are aware of the dates, locations, and the support available.

## Support Accessibility

If you know families who may face barriers to attending (e.g. transport, confidence, language), please help them explore ways to participate or connect them with someone who can assist.

## Promote Feedback

Encourage families to complete the feedback form, either at the session or online. Their input helps shape future sessions and ensures we're meeting real needs.





AUTUMN TERM

**SEND MEET & CHAT FAMILY DROP-IN SESSIONS**

**RAVEN HOUSE**

**Tuesday 23rd September 2025**  
2:00pm-4:00pm

Raven House,  
129 Cheshire Street,  
Market Drayton, TF9 3AH

**BRIDGNORTH LIBRARY**

**Tuesday 14th October 2025**  
1:00pm-3:00pm

Bridgnorth Library,  
Listley Street, Town Centre,  
Bridgnorth, WV16 4AW

**THE LANTERN**


**Thursday 13th November 2025**  
10:00am-12:00pm

The Lantern,  
Meadow Farm drive,  
Shrewsbury, SY1 4NG

**OSWESTRY LIBRARY**

**Thursday 4th December 2025**  
1:00pm-3:00pm

Oswestry Library,  
Arthur Street,  
Oswestry, SY11 1JN



## AUTUMN TERM SEND MEET & CHAT MARKET DRAYTON COMMUNITY & FAMILY HUB

Hosted by Shropshire Early Help

Family Drop-In | Tuesday 23rd September 2025 | 2:00pm–4:00pm  
Raven House, 129 Cheshire Street, Market Drayton, TF9 3AH

Join us for a warm and welcoming drop-in session where you can connect with professionals, ask questions, and explore the support available to you and your family. Whether you're looking for advice, guidance, or just a friendly chat, we're here to help.

• **Meet the Services Supporting You at Raven House**

The following services will be attending this session, ready to listen, support, and offer practical advice tailored to your family's needs:

- **Family Information Service (FIS)** - Connecting families with local services, resources, and support networks.
- **SEND Local Offer** - A one-stop hub for information, services, and resources to help families understand and access SEND support across education, health, and social care.
- **SENDIASS** - Free, confidential advice on SEND processes, EHCPs, school meetings, transitions, and more.
- **Early Help Play Practitioner** - Supporting children's development and wellbeing through play-based approaches.
- **Designated Clinical Officer for SEND** - Offering guidance on health services and how to access the right support.
- **Early Help 0–5 Team** - Support for families with young children around development, nursery, and school readiness.
- **Parent Carer Council (PACC)** - run by Shropshire parent carers and family carers, offering opportunities for the Shropshire SEND Community to provide feedback to the local system, help to navigate and understand the SEND offer and peer networks which bring SEND families together.
- **KIDS Shropshire Autism Support Services** - Emotional wellbeing and early intervention support for autistic children and young people—no diagnosis needed.
- **Shropshire HAF (Holiday Activities & Food)** - Free holiday activities for eligible children, promoting healthy lifestyles and community engagement.
- **Preparing for Adulthood (PFA)** - Helping young people (16+) and their families navigate the transition to adulthood.
- **Neurodiversity Practitioners** - Supporting neurodivergent children and young people through inclusive education and family guidance.
- **EHCP SEND Team** - Providing advice on Education, Health and Care Plans and how they support your child's needs.
- **Healthy Lives Advisors** - Promoting health and wellbeing for children and families.
- **Local Authority Attendance Officers** - Offering support around school attendance and overcoming related challenges.



### HAVE YOUR SAY!

Scan the QR code to suggest topics and activities for future drop-in sessions.



## AUTUMN TERM SEND MEET & CHAT FAMILY DROP-IN

Hosted by Shropshire Early Help



### Do you care for a child or young person with Special Educational Needs and Disabilities (SEND)?

These sessions are open to anyone supporting a child with SEND — whether you're a parent carer, family member, or professional.

Come along to ask questions, get practical advice, and connect with professionals who understand your journey

#### Speak with experts in:

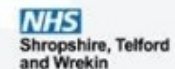
- EHCPs
- School support
- Health and wellbeing
- Social care
- Mental health
- Navigating SEND challenges

Each session will have different professionals available, so come along, have a chat, and find the help you need.



### HAVE YOUR SAY!

Scan the QR code to suggest topics and activities for future drop-in sessions.



<p><b>RAVEN HOUSE</b></p> <p>Tuesday 23rd September 2025 2:00pm–4:00pm</p> <p>Raven House, 129 Cheshire Street, Market Drayton, TF9 3AH</p>
<p><b>BRIDGNORTH LIBRARY</b></p> <p>Tuesday 14th October 2025 1:00pm–3:00pm</p> <p>Bridgnorth Library, Listley Street, Town Centre, Bridgnorth, WV16 4AW</p>
<p><b>THE LANTERN</b></p> <p>Thursday 13th November 2025 10:00am–12:00pm</p> <p>The Lantern, Meadow Farm drive, Shrewsbury, SY1 4NG</p>
<p><b>OSWESTRY LIBRARY</b></p> <p>Thursday 4th December 2025 1:00pm–3:00pm</p> <p>Oswestry Library, Arthur Street, Oswestry, SY11 1JN</p>

**SEND local offer:** <https://next.shropshire.gov.uk/the-send-local-offer/news/meet-and-chat-send/>

**Email:** [Greg.mcaloon@shropshire.gov.uk](mailto:Greg.mcaloon@shropshire.gov.uk)



# SEND and AP Change Programme

The Local Offer and SLG are currently being updated to communicate what is happening with the SEND and AP Change programme this academic year.

**NEW: monthly online updates** at 12.30pm and 4pm on the following dates to provide schools and settings with information and opportunities to get involved and shape the Local Inclusion Support Offer in Shropshire:

- 15<sup>th</sup> October
- 2<sup>th</sup> November
- 10<sup>th</sup> December
- 21<sup>st</sup> January
- 25<sup>th</sup> February
- 25<sup>th</sup> March

No need to book, just grab a cuppa and join us - click [HERE](#) for Teams links.

# Assistive Technology Lending Library

## Information Briefings and Wave 1 Launch:

Date	Time	Teams link
Wednesday 1st October	16:00-16:45	<a href="#">ATLL Briefing 1/10/25 16:00-16:45</a>
Thursday 2nd October	12:00-12:45	<a href="#">ATLL Briefing 2/10/25 12:00-12:45</a>
Friday 3rd October	14:00-14:45	<a href="#">ATLL Briefing 3/10/25 14:00-14:45</a>

You only need to attend one of these sessions.

**Scanning Pens** will be attending to launch their part of the pilot.

ATLL survey – please complete by Friday 10<sup>th</sup> October to help us shape the lending library:

- [ATLL survey for schools and settings](#)
- [ATLL survey for CYP and families](#)

# CPD Opportunities

## Welcome to the Shropshire Learning Gateway

What are you looking for?

### Early Years Information

Information on Early Years' funding, support, advice and training in Shropshire.

[Go to item](#)

### CPD

CPD opportunities for schools and settings.

[Go to item](#)

### Leadership, management and administration

Information for headteachers, governors and school administrators. Includes link to the weekly 'Education Update' (Tuesday email).

[Go to item](#)

### Teaching & Learning

Information for teaching assistants, teachers and subject leaders.

### Schools Human Resources, payroll and wellbeing

Schools HR. Payroll. Occupational Health. Wellbeing resources

### Education Access Service

School Attendance, Permanent Exclusions, Suspensions, Elective Home Education, Child Missing Education, Child Employment, Performance Licensing

# Next meeting – F2F

## North

- 1<sup>st</sup> December 1:30pm-3:00pm: Alliance of Leading Learning Building (The Marches School)

## Central

- 2<sup>nd</sup> December 1:30pm-3:00pm: Shrewsbury Guildhall, Wilfred Owen room

## South

- 3<sup>rd</sup> December 1:30pm-3:00pm: William Brookes School

[BOOK HERE](#)

**Spring 2**– we are looking for venues to host (Central and South locations): please e-mail [EQA@shropshire.gov.uk](mailto:EQA@shropshire.gov.uk)

