



Shropshire
Council

SEND and Inclusion Network Meetings

EYFS Phase
8th May 2025

On today's agenda...

- Barnardo's
- Kids
- The Child Development Centre
- Library – new ND collection
- Local Authority Updates
- Health Updates
- Upcoming CPD
- Next meeting
- Evaluation



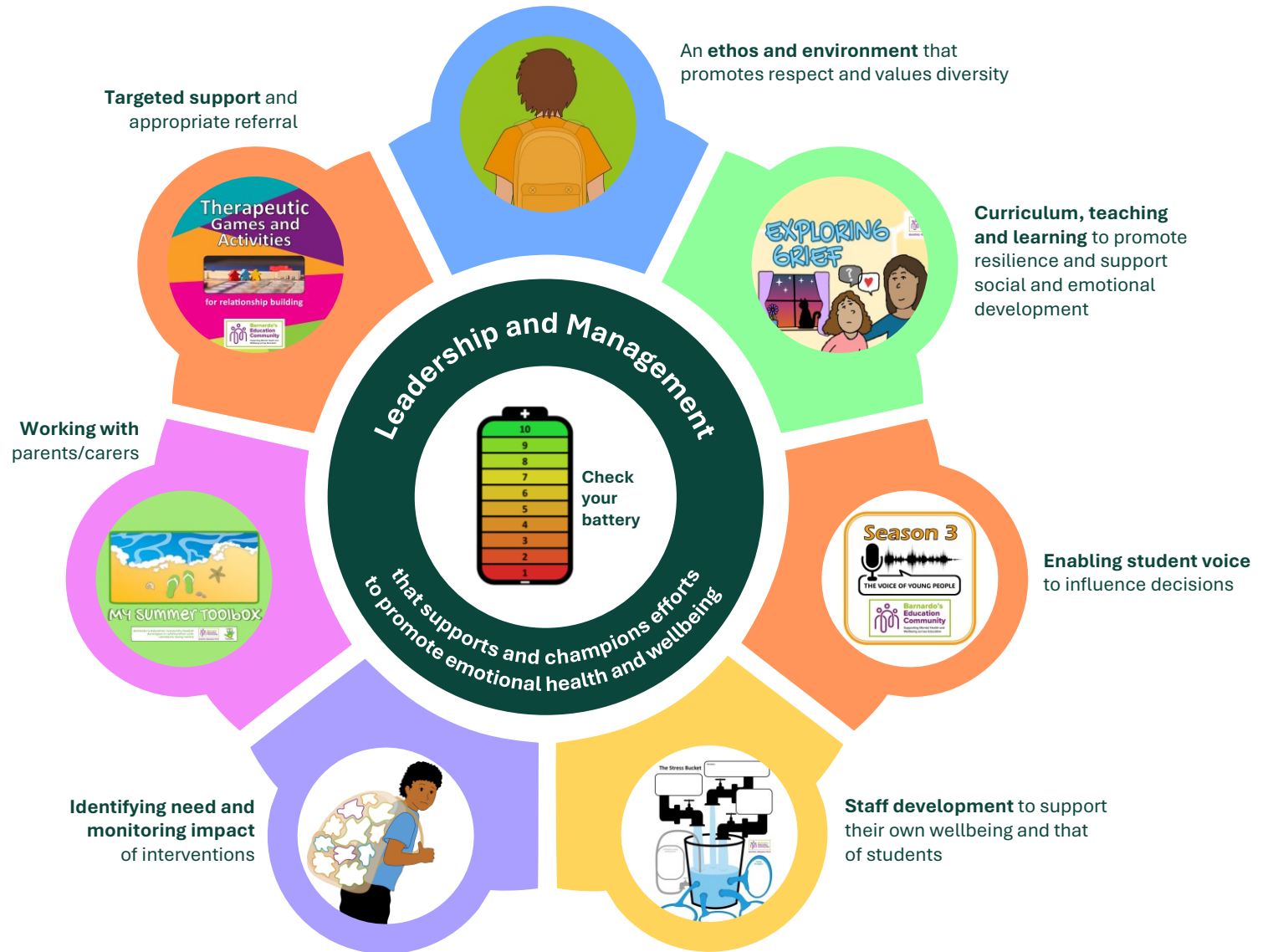
Barnardo's

Marie Thomas

Barnardo's Education Community

www.educators-barnardos.org.uk

The aim of BEC is to improve the mental health and wellbeing of babies, children and young people, and the education staff that support them, through the provision of high quality CPD, training and resources.



Whole School Approach element	BEC Offer
Leadership and Management that supports and champions efforts to promote emotional health and wellbeing	Taking Care of People You Lead 3 interconnected sessions for middle and senior leadership: Session 1 (You) People are supported to manage their own mental health and wellbeing; Session 2 (Others) People are supported to recognise influences on others mental health and wellbeing; Session 3 (Culture) People are supported to consider the impact ethos and culture have on mental health and wellbeing.
An ethos and environment that promotes respect and values diversity	All packages but particular emphasis on The Invisible Backpack Package , which focuses on the importance of working in a trauma-informed and relational way in education establishments. The backpack metaphor is used to explore underlying factors impacting on behaviour including undiagnosed and diagnosed Special Educational Needs and Disabilities.
Curriculum, teaching and learning to promote resilience and support social and emotional development	We have a range of Resources , on specific themes such as the Exploring Grief booklet as well as more general wellbeing strategies.
Enabling student voice to influence decisions	Series 3 of our Podcast is focused on hearing the voice of children and young people with episodes on eating disorders and transitioning to university, with more to come!
Staff development to support their own well-being and that of students	BEC offers a range of Continuing Professional Development (CPD) for staff. Staff Wellbeing: Our Spaces for Wellbeing programme has a range of recordings and activities, such as the Stress Bucket, that can be used in staff meetings and individually. The Layered Learning CPD Packages provide an opportunity to build upon existing knowledge. Our latest training is on Emotionally Based School Avoidance . More dates coming soon!
Identifying need and monitoring impact of interventions	Articles, Blogs and Wakelets as well as training such as the Invisible Backpack Package support staff in identifying needs.
Working with parents and carers	Booklets , such as the Coping Toolbox, have been designed for children, young people, and their parents/carers to use during the Summer holidays.
Targeted support and appropriate referrals	Our posters, activities and booklets , such as the one on Therapeutic Games , support staff to undertake targeted support with individuals and groups as well as make appropriate referrals as needed.

Leadership and Management CPD - Taking Care of People You Lead

We asked attendees 'What worked best for you today? What will you be taking away?'

'It's good to chat with other professionals and see that we are all facing the same challenges, I like that the sessions challenge how you think about situations and be more reflective... I will be putting this into practice.' - Early Years Leader

'Resources were brilliant, group chat was really helpful. Session leaders were all fabulous and knowledgeable.' SENCo

'Time to think and reflect on staff health and wellbeing - to look at the various strands, look at the tools available and think how I can use them. I actually have a plan now of how to move things forward.' - Middle Leader

Session 1 (You)

54% increase in people rating their **awareness of personal wellbeing** as high. (46% before vs 100% after)

91% said they were highly likely to use what they have learned in the future.

Session 2 (Others)

63% increase in people feeling confident in being able to **support their colleagues and manage their health and wellbeing**. (20% before vs 83% after)

93% said they were highly likely to use what they have learned in the future.

Session 3 (Culture)

64% increase in people feeling confident that they were **creating a positive culture for all around health and wellbeing**. (15% before vs 79% after)

93% said they were highly likely to use what they have learned in the future.

Ethos and Environment

Invisible Backpack Package

'This training has been exceptional - thank you! (It was) relevant to all levels of staff. Essential for supporting the children in our setting.'

Headteacher - attendee

Outcomes:

- **88% of attendees reported an improvement in their knowledge and understanding** of a relational approach, the invisible backpack metaphor, and research/evidence relating to the impact of early relationships and childhood experiences (Part 1)

Staff Development

Layered Learning CPD Package - Self-Harm and Suicidal Behaviours in CYP

'Excellent delivery by trainers, very knowledgeable and approachable. Supported all learners. (Encouraged all to participate)' - attendee

Outcomes:

- BEFORE the training **16.67%** of attendees classed their knowledge and awareness as very good and above.
- AFTERWARDS this rose to **87.26%** representing an **increase of 70.59%**.



Barnardo's Education Community

Supporting Mental Health and
Wellbeing across Education

Website: www.educators-barnardos.org.uk

Email: becommunity@barnardos.org.uk

X: [@BarnardosEduCom](https://twitter.com/BarnardosEduCom)

→ carly.goodwin@barnardos.org.uk

→ lucy.kuipers@barnardos.org.uk

→ marie.thomas@barnardos.org.uk

Barnardo House, Tanners Lane, Barkingside,
Ilford, Essex IG6 1QG | Tel: 020 8550 8822

Barnardo's Registered Charity Nos.216250 and SC037605 24413AM23



**Changing childhoods.
Changing lives.**

Kids

Dawn Lewis

Kids

Disabled children
say we can

Shropshire Autism
Support Service –
Update
May 2025





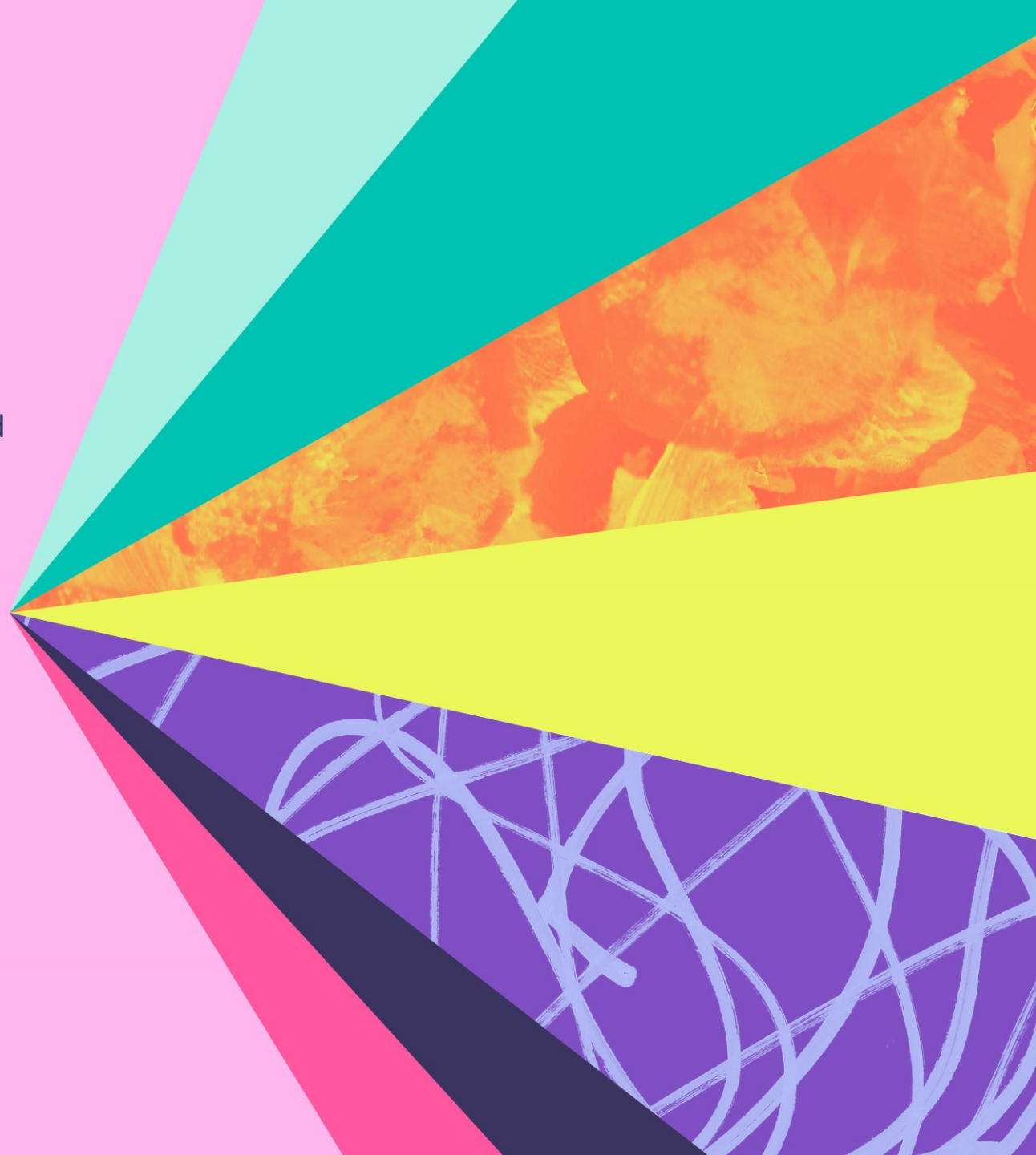
Introduction to Kids...

Kids is on a mission to create a world where all kinds of children and young people have all kinds of opportunities. Creating life-changing opportunities by providing a wide range of support.

- From early years into adulthood.
- Learning and development.
- Play schemes
- Adventure playgrounds and youth groups. Parent support and mediation.
- Social connections and emotional wellbeing.

When the world blocks children and young people with special educational needs and disabilities,

Kids speaks up.





Introduction to Kids...

- We are a national charity established in 1970
- Our target is to support 50,000 service-users in 2024/2025
- We have 62 Unique projects across the UK – in person support services and innovative online support hubs and workshops

Kids

Disabled children
say we can

Kids will be offering the following support to families:

The Healthy Parent Carers programme aims to improve health and wellbeing among parents of children with additional needs and disabilities through:

- Promoting greater empowerment, resilience and confidence of parent carers;**
- Taking small steps that are associated with better health and wellbeing;**



Kids

Disabled children
say we can

Kids will be offering the following support to families:

Riding the Rapids'

The programme is designed to support parent carers' understanding of behaviour and implement support strategies.

The course enables parents to understand their child's behaviour in the context of their additional needs, and apply strategies to support positive behaviours.

It also helps parents to develop stress management strategies and confidence in managing their child's behaviour. The course is collaborative, so that parents develop tools they can take with them and continue to apply once the intervention is complete.



Kids

Disabled children
say we can

Kids will be offering the following support to families:

Bespoke workshops that cover:

- ASD Vs ADHD (3 hours)
- Neurodiversity (Specifically Autism, ADHD and Demand Avoidance)
- Girls and the Autistic Spectrum
- Demand Avoidance
- Sleep
- EBSA



Kids

Disabled children
say we can

Coming Up in May/June:

Healthy Parent Carer Programme

Online for parent carers to enhance health & wellbeing.

Monday 12th May 10-1pm for six weeks

Coffee and Connect

Tuesday 20th Shrewsbury Library 10-11.30am

Tuesday 3rd June Shifnal Trinity Centre 10-11.30am





We will also be:

- Running taster sessions and drop ins
- Child/young person 'Understanding me' group sessions
- One to one support

For more details check out our website.

Web: kids.org.uk/shropshire-universal-autism-support-service





How to refer into the service:

Parent/carers can complete our online referral form, via the link below:

[Shropshire Universal Autism Support Service - Kids](#)

How to Contact Us:

Phone: (01743) 644506

Email: kids.shropshire@kids.org.uk

Web: kids.org.uk/shropshire-universal-autism-support-service



Kids Disabled children
say we can

Registered Charity No. 275936

Shropshire Universal Autism Support Service

Our free service will offer bespoke workshops covering the following areas:

- Neurodiversity (Specifically Autism, ADHD and Demand Avoidance)
- Girls and the Autistic Spectrum, Demand Avoidance, masking
- Sleep
- EBSA

Kids Family Support

'**Healthy Parent Carer**' programme is designed to reinforce parent carers' resilience and improve health and wellbeing among parents of children with additional needs and disabilities through:

- Promoting greater empowerment, resilience and confidence of parent carers;
- Taking small steps that are associated with better health and wellbeing;
- Encouraging setting achievable goals and taking a problem-solving approach



'**Riding the Rapids**' programme to support parent carers' understanding of behaviour and implement support strategies.

- To understand their child's behaviour in the context of their additional needs, and apply strategies to support positive behaviours
- Develop stress management strategies and confidence in managing their child's behaviour
- Collaboration to develop tools they can take with them and continue to apply once the intervention is complete

Further Support

- Coffee mornings
- Drop-in sessions
- One-to-one support
- Child/young person 'Understanding me' group sessions

Contact Us:

Phone: (01743) 644506

Email: kids.shropshire@kids.org.uk

Web: kids.org.uk/shropshire-universal-autism-support-service



The Child Development Centre

Alison Parkinson

Shropshire Early Years SEND and Inclusion Network meeting

Alison Parkinson

Clinical Services Manager Children's Therapies and Child Development Centres

Children's Allied Health Professions Lead

March 2025



Child Development Centre Pathways

- 4 Pathways of which 3 include an ASD assessment and all offer some pre and post assessment support
- First Links- Therapies and Specialist Nursery Nurse groups, Multi disciplinary assessment linked with ECHNA process, post assessment care and support from Therapists and Specialist Nursery Nurses
- 3 ASD Pathways
 - Communication and Interaction Assessment
 - Standard Assessment
 - 4-5 years ASD Assessment

Child Development Centre Pathways

Recent Developments

- Investment of 200K for additional assessments (no interventions)
- Subcontracting process to accredited private providers to support short term with the waiting list- has begun and more to come
- Recruitment of additional 4 full time and 1 part time health care practitioners- 2 completed, 3 in progress
- Redesign of pathways following waiting list initiative last summer
- CDC Advice Line- especially for support whilst waiting

Coming soon

- Flow charts for the 4 main pathways
- Completion internally following co-production with parents over a year ago
- Sharing with parents- week of 31st March . Their feedback and improvements
- Sharing with partners and published on our website May 25
- **Sneak peak.....**



[First Links.pptx](#)

Child Development Centre Team

- Specialist Nursery Nurses
- Administrators

In reaching from other NHS teams

- Community Paediatricians
- Speech and Language Therapists
- Occupational Therapists
- Physiotherapists

In reaching from LA team

- Educational Psychologists

Child Development Centre Data

Referral Information April 24-February 25

First Links	Communication and Interaction	Standard	4-5 and post MDA
10	43	18	52

+ 36 children younger than age criteria- which for ASD assessment is 3 years

Current waiting list Information 17th March 25

Numbers of children waiting on each pathway

1	41	17	60
---	----	----	----

Longest Wait in weeks on each pathway

4	53	60	66
---	----	----	----

+ 33 children waiting for more information for a decision at panel

What does this mean for you?

- Link with requests for LA support from settings
- Your education proforma returns for panel and for assessment
- Link with Inclusion panel
- Link with echna process

Questions

For more information visit our website

[Child Development Centres in Shropshire and in Telford and Wrekin](#)

Or follow us on

<https://www.facebook.com/EarlylinksFirststeps>



Shropshire Libraries Neurodiversity Collection and Library Information

Shropshire Libraries Neurodiversity Collection and Library Information

Annabel Gittins - Library Support Manager, Shropshire Libraries
Annabel.Gittins@shropshire.gov.uk

Shropshire Libraries

- 21 library branches
- 3 mobiles
- e-library – FREE e-books, e-audiobooks, e-newspapers, e-magazine
- FREE children's activities (mostly)
- FREE access to books for the whole family
- FREE Wifi and access to PCs

www.shropshire.gov.uk/libraries

Shropshire Libraries' Neurodiversity Collections

- **Neurodiversity Collection for Families**
- **Neurodiversity Collection for Adults and Young People**
- **Books Beyond Words** – wordless picture books for people with learning disabilities
- Collections held at **Oswestry, Shrewsbury, Library at the Lantern, Bridgnorth, Ludlow, Church Stretton, Wem** libraries.
- All titles available for request from all other libraries

Neurodiversity collection for families

A collection of 41 titles aimed at children and their families including:

- **Stories:** Picture books and junior fiction featuring neurodivergent characters.
- **Real-life experiences:** Junior non-fiction titles examining the autistic/neuro-diverse experience from the perspective of a child.
- **Guide to conditions:** Junior non-fiction titles explaining a variety of neurodivergent conditions to children.
- **Famous faces:** Junior non-fiction titles introducing children to famous, inspirational neurodivergent figures.
- **Navigating the world:** Practical guides helping neurodivergent young readers navigate the world around them.
- **Support guides:** Adult non-fiction titles aimed at parents, carers and professionals, offering advice on how to best support neurodivergent children.



Neurodiversity collection

A collection of 21 titles aimed at adults and young people including:

- **Stories:** Teenage and adult fiction depicting neurodiversity
- **Personal accounts:** Memoirs exploring the autistic/neuro-diverse experience (including late diagnosis)
- **Guide to conditions:** Guides to neurodivergent conditions aimed at increasing understanding amongst everyone.
- **Navigating the world:** Practical handbooks providing support and advice to neurodivergent individuals on how to best navigate the world around them.
- **Celebrating neurodiversity:** Non-fiction titles celebrating human cognitive diversity and the lives of influential neurodivergent figures



Books Beyond Words



- A collection of 21 wordless picture books for people with learning difficulties.
- Designed for those who find pictures easier to understand than words, the books give people with additional communications needs the tools to share and understand their feelings and the world around them, as well as participate in decisions about their lives.

Shropshire Libraries

Joining the library – click on [Join the library | Shropshire Council](#) or ask in your local branch

[Concessionary Ticket](#) - request titles for free and longer for each loan

[Using the e-library](#): once you have a library membership number and pin, explore the e-library

Questions? Email - libraries@shropshire.gov.uk or contact Annabel about the neurodiversity collections



Shropshire
Council

Local Authority Updates



SEND and inclusion newsletter

[Home](#) > [The SEND local offer](#) > [Practitioners](#) > SEND and inclusion newsletter

The local authority education quality advisers for SEND and AP produce a half termly newsletter for schools and settings which is aimed at practitioners and professionals who work with children and young people with SEND in Shropshire.

All past and current newsletters can now be found on the [Shropshire Learning Gateway](#).

SEND and Inclusion Comms

- **In order to improve the timeliness in which we can share information with you and to keep information for settings and schools in one place, we are further developing the Shropshire Learning Gateway (SLG).**
- All information for SENCOs, settings and schools that relates to inclusive practice, training and resources is moving over to the SLG.
- CPD opportunities are now all together on a dedicated CPD page, EY SEND training will be available in both the Early Years and SEND and Inclusion sections—click [HERE](#)
- Inclusive Practice information for practitioners, including newsletters, slides from network meetings, resources in a new Inclusive Practice section—click [HERE](#)
- All information and paperwork relating to Early Years Inclusion Advice and Funding (EYIAF) - click [HERE](#)

The Local Offer will remain as a central point of information for all things SEND and you will be able to link to all information from the Local Offer but for ease of updating, the SLG will host the main content for practitioners.

If you have any suggestions for online content you would like to see made available for practitioners or for parent carers, please e-mail us: EQA@shropshire.gov.uk

Newsletter Delivery — *subscribe now!*

We are shortly moving to using the GovDelivery system for the SEND and Inclusion newsletter so that it can be delivered direct to your inbox. **We therefore need to ensure we have your correct e-mail address.**

Please complete the following MS Form as soon as possible so that we can add you to the mailing list:

<https://forms.office.com/Pages/ResponsePage.aspx?id=ETDBti03i0O8gmfkx5ZuiaazIZIIUHZPgyIWnpSskWxUOEhJUUtJU0pLTDM0MFITUUw5NEtMNTM1Vi4u>

A link to the newsletter will continue to be added to the Inclusive Practice pages of the SLG so you will be able to view and download it if you don't receive the e-mail.



Shropshire Learning Gateway

- Links for:
 - CPD [SEND and Inclusion | Shropshire Learning Gateway](#)
 - Newsletters [SEND and Inclusion Newsletter | Shropshire Learning Gateway](#)
 - Network slides [Slides and handouts - past meetings | Shropshire Learning Gateway](#)

Can now be found on the SLG [Inclusive practice | Shropshire Learning Gateway](#).

You will be directed to the SLG if you find yourself on the Local Offer.



The local authority education quality advisers for SEND and AP produce a half termly newsletter for schools and settings which is aimed at practitioners and professionals who work with children and young people with SEND in Shropshire.

All past and current newsletters can now be found on the [Shropshire Learning Gateway](#).

ELSEC Wave 2 Expression of Interest

We are delighted to open expressions of interest for wave 2 of ELSEC, commencing September 2025.

ELSEC (Early Language Support for Every Child) is a 2-year pilot project, commissioned by the DfE and NHS England, as part of the SEND and AP Change Programme.

In Wave 1, the ELSEC team has worked to reduce the communication gap by up to 75%, meaning that more children are able to access a full curriculum offer, are more confident socially and have enhanced life chances in the future. Where settings have fully engaged in what ELSEC has to offer, the impact has been both significant and sustainable.

From September 2025 we will be looking to work with a new set of schools and nurseries to expand the skillset for Speech, Language and Communication Needs (SLCN), in both Shropshire and Telford and Wrekin.

As an ELSEC team we can offer:

- A dedicated member of the ELSEC team to work collaboratively with you in your setting, on a weekly basis.
- Regular support from a speech and language therapist and specialist teacher.
- Modelling, coaching and support to deliver quality interventions, currently including Talk Boost, BEST (Building Early Sentence Therapy), Concept Cat and narrative skills.
- Communication friendly classroom audits.
- Parent workshops.
- Two whole school CPD sessions.

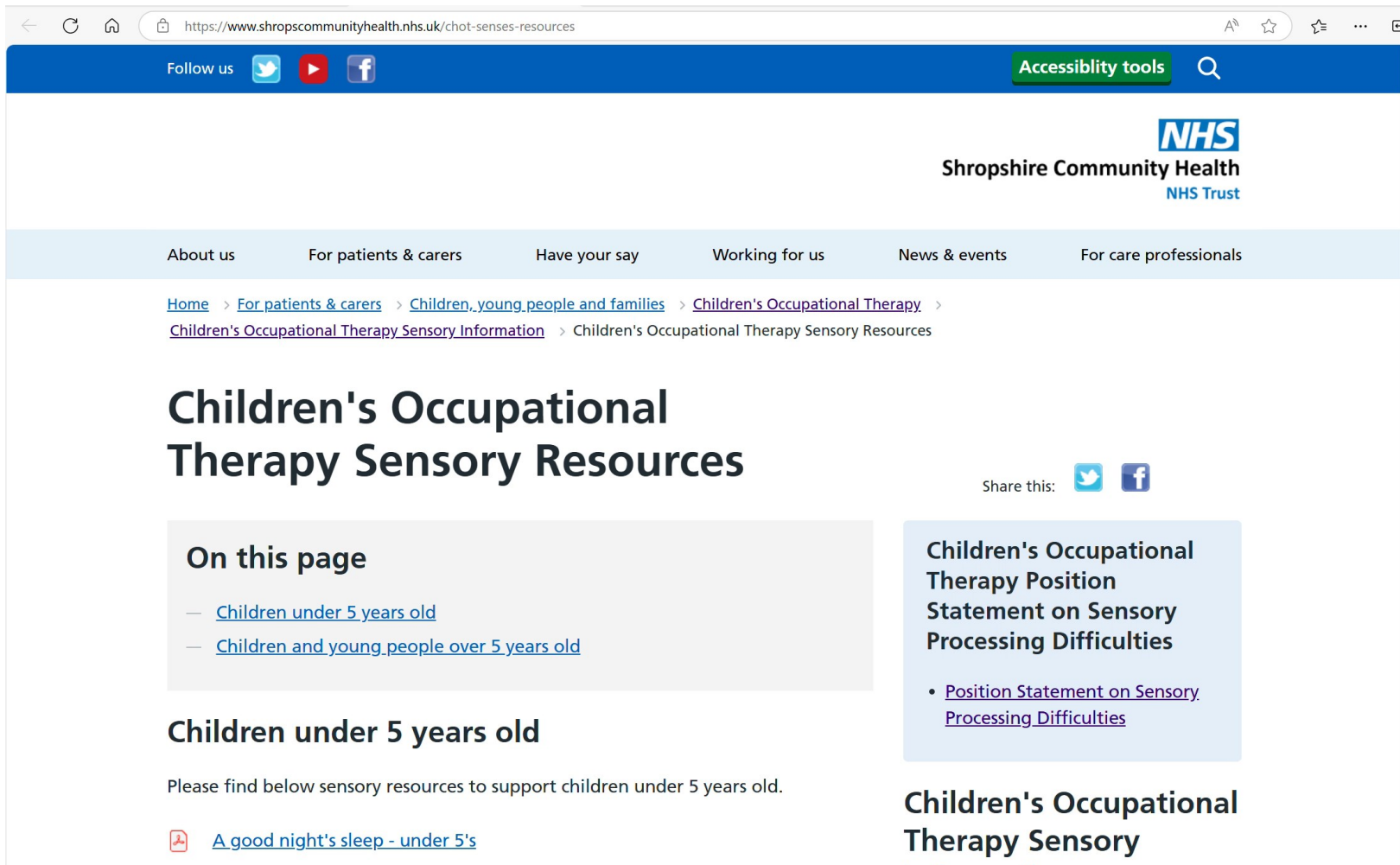
In return we ask for:

- A warm welcome to your setting.
- Named staff in each setting as a first point of contact – to include Headteacher and / or SENCo.
- Key staff that are identified for training and delivery of interventions.
- A quiet space to run interventions and parent workshops.



If you would like to express your interest in joining the ELSEC project for September 2025, please email Louise Such, at louise.such@telford.gov.uk, **by Friday 9th May, 5pm (ideally), but can extend beyond**


Updates from Health

Occupational Therapy



https://www.shropscommunityhealth.nhs.uk/cho-ot-senses-resources

Follow us   



Accessibility tools 

NHS
Shropshire Community Health
NHS Trust

About us For patients & carers Have your say Working for us News & events For care professionals

[Home](#) > [For patients & carers](#) > [Children, young people and families](#) > [Children's Occupational Therapy](#) > [Children's Occupational Therapy Sensory Information](#) > Children's Occupational Therapy Sensory Resources

Children's Occupational Therapy Sensory Resources


Share this:  

On this page

- [Children under 5 years old](#)
- [Children and young people over 5 years old](#)

Children under 5 years old

Please find below sensory resources to support children under 5 years old.

 [A good night's sleep - under 5's](#)

Children's Occupational Therapy Position Statement on Sensory Processing Difficulties

- [Position Statement on Sensory Processing Difficulties](#)

Children's Occupational Therapy Sensory

- The Occupational therapy Service have published their position statement re Sensory Processing Difficulties: [Children's Occupational Therapy Sensory Resources](#)

The Healthier Together website

[Healthier Together](#) provides advice for those caring for babies, children and young people in Shropshire and Telford. It provides consistent, accurate and trustworthy healthcare advice on common childhood illnesses for both physical and mental health, and information on long term conditions. It also provides details of where to seek help if required and national and local support services. All the information on the site is checked by clinicians, and local organisations and parent carers are involved in its content development.

There have been two recent additions to the website

- The support offer for Speech Language and Communication Needs - [Support for Speech, Language and Communication Needs \(SLCN\)](#)
- Signposting information for families whose children are waiting for a health assessment/appointment - [Support available while waiting for your appointment](#)

These new sections build on other recently developed sections such as the [Neurodiversity pages](#) which contain articles about common neurodivergent conditions and the Neurodiversity support offer.

[Support for neurodivergent children and their families](#)

- The Healthier Together website provides consistent, accurate and trustworthy healthcare advice for parents, carers, young people and professionals. All the information on the site is checked by clinicians, and local organisations and involves parent carers in its content development.

Useful health links

- [Health Visitors](#)
- [Support for neurodivergent children and their families](#)
- [Support for Speech, Language and Communication Needs \(SLCN\)](#)
- [BeeU :: Midlands Partnership University NHS Foundation Trust](#)
- [Child Development Centre](#)

Upcoming CPD

Date	Course Title	Venue	Cost	Booking Link
20th May 6-7pm	Early Years graduated response through the APDR Process	Online	n/a	https://www.eventbrite.co.uk/e/1280995675549?aff=oddtcreator
23rd May 10-11am	Early Years graduated response through the APDR Process	Online	n/a	https://www.eventbrite.co.uk/e/1280998995479?aff=oddtcreator
TBC	AET: EY Good Autism Practice (GAP)	TBC – three locality-based twilight session across the county	TBC	TBC



Early Years SENCO Level 3

This qualification is designed for Level 3 practitioners working in private, voluntary or independent early years settings. It's also suitable for Ofsted-registered childminders and childminder agencies.

Early Years SENCOs play a key role in identifying and supporting children with special educational needs and disabilities (SEND). They work closely with families and professionals to make sure children receive the right support, helping to secure the best possible outcomes in their early development and learning.

⚠ Limited funding available ⚠

The Department for Education has agreed to fund a limited number of **Early Years SENCO Level 3** places for the **June Intake**.

With high demand expected, places will be allocated quickly — we strongly recommend applying **as early as possible** for the best chance of securing a place.

[Apply now](#)

Next meeting

- There is no face-to-face network meeting in the second half of this term as we will be launching the Shropshire Inclusive Practice Guidance for Early Years settings at our face-to-face EY network meeting– *hope to see you all there!*

2025/2026

Autumn 1

- Early Years Online Network meeting, Tuesday 30th September
- 6pm-7pm via Teams
- Sign up via the link on the SLG soon: [CPD Schedule and Booking Information 2024-2025 | Shropshire Learning Gateway](#)

Autumn 2, Spring 2 and Summer 2 – we are looking for venues to host (North, Central and South locations):
please e-mail EQA@shropshire.gov.uk

Network Meeting Evaluation

<https://forms.office.com/e/kEP0cZgUNF>

SEND and Inclusion Evaluation
Survey May 2025

