

SEND and Inclusion Network Meetings

1st, 2nd and 3rd December 2025

On today's agenda...

Welcome and Introductions

Reducing Parental Conflict

Presenter: Ash Molloy

SEND IASS

Presenter: Carrie Choudhary

CPD updates

EQA Team

Assistive Tech Lending Library

- Overview and aims
- Widget online (Dipa Chohan)
- AssistiveWare: Proloquo (Euan Robertson)
- Scanning Pens (Jim Bowen and Katie Meyer)
- ATLL SharePoint and how to request software and hardware

Summary and Close



Reducing Parental Conflict

Ash Molloy <Ash.Molloy@shropshire.gov.uk>

Children bring joy, new experiences and challenges into the lives of their families, but there can also be emotional challenges and stigma experienced by parents of children with special educational needs and/or disabilities (SEND).

240 parents in completed a questionnaire that showed that there were points of particular stress, e.g. when their children's difficulties were unrecognised, the diagnosis itself, and then obtaining support.

Significant areas of stress included parents having feelings of guilt and emotional strain, with experiences of isolation for the family and negative impacts on parental mental health. This stress led to the breakdown of parental relationships in some of those families.



The impact of parental conflict on children with SEND may be even more detrimental as routines and care can be heavily disrupted by separation. Divorce rates are significantly higher in families with children with SEND.

We must take every opportunity to support the inter-parental relationship.

Always ask, “how is this effecting your partnership?”

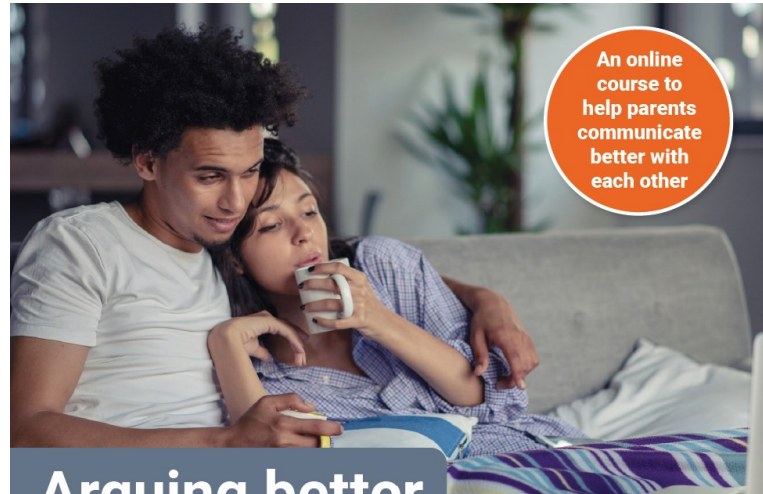
Sources of support or guidance for parents struggling in their relationships

Seeking support for partner relationships

In a survey of Shropshire parents, 58% told us their first source of support would be family and friends. Online searches would be the main source of guidance for 23%. Other options stated were GP, counselling services (e.g. Relate), private therapy, solicitor. None of the respondents had used Shropshire Council's online courses. Please share our **Getting On Better** information pages with parents.



www.shropshire.gov.uk/getonbetter



Arguing better

Disagreements are a normal part of life, and most couples argue from time to time. How you deal with disagreements can make a big difference to you, your partner, and your children.

This free online course can help you learn to manage difficult conversations, avoid conflict, and improve things for your whole family.



Create your free account at www.oneplusone.org.uk/parents or scan the QR code

To access the course, you will need a good internet connection and a smartphone, tablet, or computer.



Home - Relationship Matters

Helping families and couples (whether together or separated) understand and build healthy relationships.

The Parent Promise

Produced by the Parenting Alliance the **Parent Promise** is a simple statement that you can ask troubled parents to sign, to help them refocus on the needs of the children.

You can find that statement here:

[The #ParentsPromise - Home](#)

CPD Opportunities

Welcome to the Shropshire Learning Gateway

What are you looking for?

[Search](#)

Education Update

The weekly email to schools. Issued each Tuesday in term time.

[Go to item](#)

Early Years Information

Information on Early Years' funding, support, advice and training in Shropshire.

[Go to item](#)

CPD

CPD opportunities for schools and settings.

[Go to item](#)

Leadership, management and administration

Teaching & Learning

Information for teaching assistants, teachers and subject leaders.

Schools Human Resources, payroll and wellbeing

Assistive Technology Lending Library

What is it?

- The Assistive Technology Lending Library Pilot is part of the SEND and AP Change Programme
- The Local Authority will receive grant funding to purchase devices and software to loan to schools
- Schools can borrow a specific device and/or software to *'try before they buy'*
- The ATLL aims to support the inclusion of children and young people with SEND in the classroom
- The ATLL pilot will run until the Summer term, 2026

Widget Online



Shropshire
Council

AssistiveWare



Shropshire
Council

scanningpens

Scanning Pens

Shropshire Assistive Technology Lending Library Pilot Program

Katie Mayers

Email – katiem@scanningpens.com

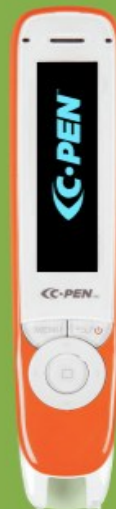
Phone - 020 8132 6196

Business Development & Education Executive

Overview

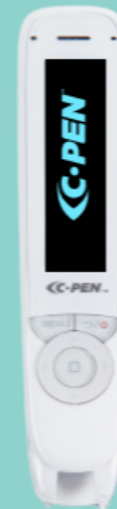
- Exam Reader2
- Impact Study
- Reader2/Reader3
- Impact Study
- Additional Resources
- Pilot Program & Sign Up
- Q&A

EXAM READER 2™



- Promotes inclusion in exams
- Reliable alternative to a human reader
- Saves schools time & money
- Reads in multiple languages & dialects
- No Wi-Fi needed

READER 2™



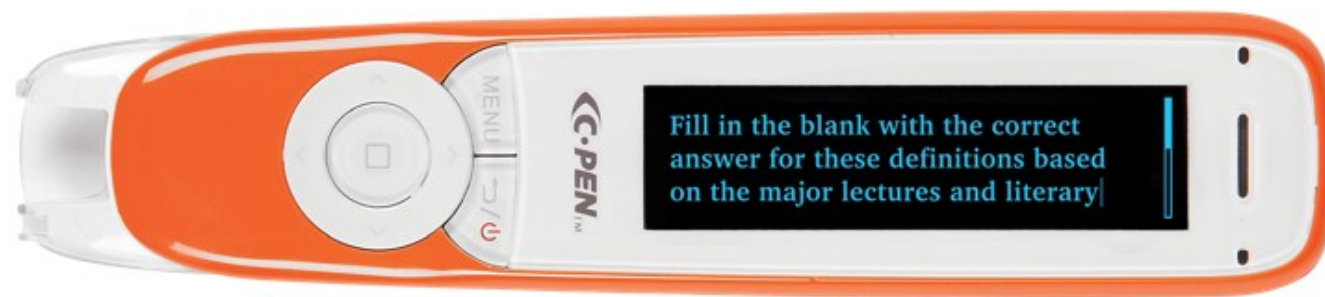
- Supports independent literacy growth
- Read & Define for vocabulary needs
- 8+ hours of battery life
- Supports English, French, Spanish & Italian
- No Wi-Fi or apps required

READER 3™



- Nurtures literacy development
- Converts text to speech
- Library to review saved text & audio
- Inclusive touchscreen navigation
- Wi-Fi & Bluetooth ready
- Even more features online

EXAM READER 2™



Reader



Settings

Exam Reader 2 Benefits

- JCQ Approved – including functional skills English Reading Exams and MFL
- No need to apply for Access Arrangements or fill in a Form 9 – should be Normal Way of Working
- Students can sit in the same room as peers with their headphones plugged in – less invigilators and room allocations needed
- Run Wizard – set to each individual students' preferences
- MFL - Spanish, French, German, Italian, Swedish, Danish, Norwegian, Dutch, Portuguese, Russian, Chinese



Coimisiún na Scrúduithe Stáit
State Examinations Commission
Corr na Madadh, Baile Átha Luain, Co. na hIarmhí
Cormacaddy, Athlone, Co. Westmeath



Joint Council for
Qualifications



ISEB
Independent Schools
Examinations Board



UNIVERSITY of CAMBRIDGE
International Examinations

CAMBRIDGE INTERNATIONAL CENTRE

JCQ STATEMENT: "The arrangement 'Read Aloud' would also include the use of an examination reading pen. A permitted examination reading pen will not have an in-built dictionary or thesaurus, or a data storage facility. An approved application for a computer reader would also allow the use of an examination reading pen."

Impact Study



We have students in KS4 who have KS1 reading ages. In spite of intensive and long-term interventions, they have been unable to master reading. They have very low self-esteem as learners and have been extremely anxious about engaging in text across the curriculum. Giving them access to the reader pens has transformed their self esteem, their confidence as well as their engagement in the curriculum, and has increased their grades across all subjects.

Susie Scotting
Peacehaven Community School

I have a year 11 who made no attempt at their English language reading questions until they were given the reading pen, they achieved a level 4 in their GCSE and this has given them entry to a college course at a higher level than they hoped.

The student practiced with a Teaching Assistant who had experienced a similar difficulty in their English Language GCSE and she is now the advocate for the reading pen and demonstrates its use to our year 9 and 10 students who have been identified with a need.

G Ridley
Marriotts School

98%

of schools would recommend the Exam Reader 2 to other schools

90%

achieved their expected results, or even better than expected!

98%

said the Exam Reader 2 is a more cost effective solution when compared with human readers and 1-to-1 rooming

READER 2™



READER 3™



Reader 2 & 3 Benefits



C-Pen Reader 2

- Built-in Dictionary (OPD, Collins, NOAD), Recorder, 16GB Storage and Practice Mode.
- Languages – English, French, Spanish and Italian.
- A discreet, inclusive classroom tool that builds student confidence, reduces reading anxiety, supports curriculum access, and encourages independence.



C-Pen Reader 3

- Wi-Fi & Bluetooth, Built-in Dictionary (OPD, Collins, NOAD), Online Dictionary, Online/Offline Translation, 3 translation modes (Word Mode, Full Text, Conversation), Recorder, 16GB Storage, Practice Mode and Touchscreen.
- Languages – English, French, Spanish, Italian and German
- An inclusive and discreet classroom tool that fosters independence, supports EAL learners, and provides access to advanced definitions through online dictionaries.

Impact Study



George Dixon Primary School ReaderPen™ Research Project

AIM OF THE STUDY To undertake an evaluation of the impact of using a ReaderPen™ on primary school children who have literacy issues.

8-WEEK PROJECT **10** students in Years 4, 5 and 6 on the dyslexia pathway and in need of additional support on top of existing interventions were selected to participate in the project.

Assessment



The York Assessment of Reading for Comprehension (YARC) was used at the beginning and end of the project measuring three components, reading accuracy, comprehension and reading rate.

YARC is an individually administered reading assessment that allows you to closely observe a pupil's reading behaviors, strengths, and areas for development.



Results

The reading accuracy in read aloud graded text revealed a mean difference between pre-and post-testing of **10.25 months**.

The comprehension component of the same assessment showed a mean difference between pre-and post-testing of **10.42 months**.

The reading rate component of the assessment revealed a mean difference between pre-and post-testing of **7 months**.



PRINCE ALBERT HIGH SCHOOL: A CASE STUDY

Growing Independent Secondary Readers in Birmingham



In just 6 weeks - significant gains were made by a Year 8 Nurture Group between the pre-and post-test sessions when assessed against the York Assessment of Reading (YARC) Criteria.

COMPREHENSION:

**1 YEAR &
4 MONTHS** ↑

READING ACCURACY:

5.4 ↑
MONTHS

READING RATE:

2.4 ↑
MONTHS



"Used daily, the C-Pen Readers, helped to develop learning confidence, increased literacy and boosted reading engagement." – Ms. T. Lead Teacher

Pupil's attitudes evolved to see themselves as **successful learners**. And gained strategies for **independent learning**.

Exploring Features



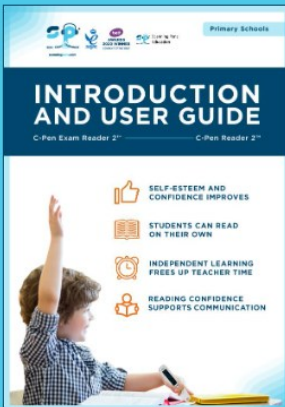
Using dictionary definitions
How to access dictionary definitions.
Suitable for: Reader 2.



Advanced reader settings
Take your Reader function to the next level.
Suitable for: Reader 2, Exam Reader 2 and Secure Reader 2.

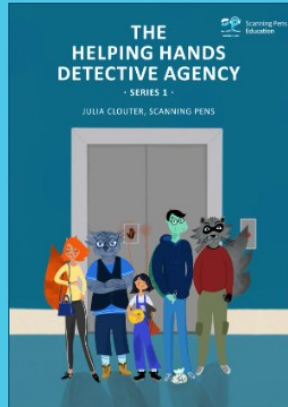


Using the recorder
How to record voice notes using your reading pen.
Suitable for: Reader 2.



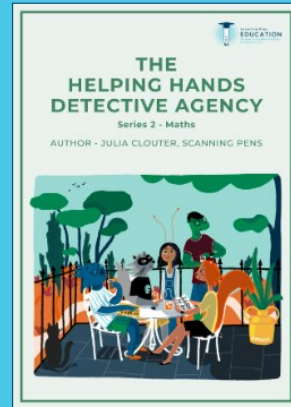
Implementation Guide
Primary - R2 ER2

Download



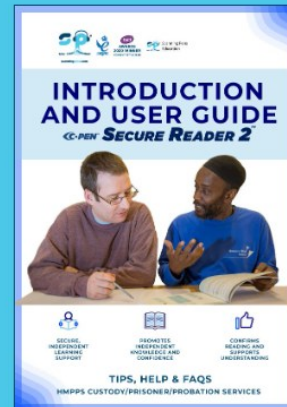
Helping Hands Detective
Agency

Download



Helping Hands Detective
Agency - Maths

Download



C-Pen Secure Reader 2
Implementation Guide

Download

Training Hub

- Short Videos on the features
- Free downloadable resources

Recommendations

- Introduction and User Guide
- Helping Hands Detective Agency

www.scanningpens.co.uk

Pilot Program



What's Included in Your Pilot Program:

- 2x C-Pen devices per school — ready to support learners from day one.
- 60-day extended trial — explore the impact at your own pace.
- No obligation to purchase — simply return the devices if it's not the right fit.
- Online training session — with your dedicated account manager to guide initial rollout and answer questions.
- CPD-accredited training — led by Scanning Pens' Head of Education, covering best practice, whole-school implementation, and literacy strategies.

Join the movement:

Over 450 schools have already taken part in our pilot program — empowering learners and shaping inclusive practice nationwide.

**SCAN ME TO
SIGN UP**





Find all our devices and
resources on our website

www.scanningpens.co.uk

Have a question or query?

Email me at katiem@scanningpens.com | Call me on 020 8132 6196 Or follow us
on LinkedIn for updates from our team!



Software and Hardware

The following software is available to request now via free, extended trial licenses:

- ✓ Widget Online (7 weeks)
- ✓ Proloquo (3 months)

The following hardware is available to borrow now:

- ✓ Scanning Pens (60 days)

*Further hardware and Clicker software to follow asap – please look out for updates in January

How to request software

[Assistive Technology Lending Library: Software Request Form – Fill in form](#)

Assistive Technology Lending
Library: Software Request Form





Local Specialist Support Offer

Home Alternative CPD for SEND and inclusion AP Directory ... Edit Private group Not following 6 members



+ New Promote Page details Preview Immersive reader Analytics Published 14/11/2025 Share Edit

Assistive Technology Lending Library



Robert Court
Education Quality and Safeguarding Business S...

The Assistive Technology Lending Library is a SEND and AP Change Programme funded pilot that will provide schools with the opportunity to trial assistive technology devices and software with pupils before committing resources to buy.



- All slides, MS forms etc from today will go on the SLG by the end of this week
- Any questions, please email Robert.court@shropshire.gov.uk

Next Network Meetings

2 nd February 3.30-4.30pm	Online SEND and Inclusion Update: Secondary and Post- 16	MS Teams	https://www.eventbrite.co.uk/e/1664332686869?aff=oddtcreator
3 rd February 3.30-4.30pm	Online SEND and Inclusion Update: Primary	MS Teams	https://www.eventbrite.co.uk/e/1664400650149?aff=oddtcreator
3 rd February 7-8pm	Online SEND and Inclusion Update: Early Years	MS Teams	https://www.eventbrite.co.uk/e/1664405915899?aff=oddtcreator