

SEND and Inclusion Network Meeting

Early Years

Tuesday 28th April 2026



Please mute your mic
when you join the
meeting – thank you!

Welcome and Introductions

- **Kids**

Presenter: Dawn Lewis

- **Local Area SEND Reform Plan**

Presenter: Sarah Court

- **EySSO Feedback survey**

Presenter: Heidi White



Kids

Dawn Lewis



Shropshire

Kids

Disabled children
say we can

Kids Shropshire Autism Support Service

Introduction to Kids...

- Are a national charity established in 1970
- Target was to support 50,000 service-users in 2024/2025, which was achieved.
- Have 62 Unique projects across the UK – in person support services and innovative online support hubs and workshops



Introduction to Kids Shropshire

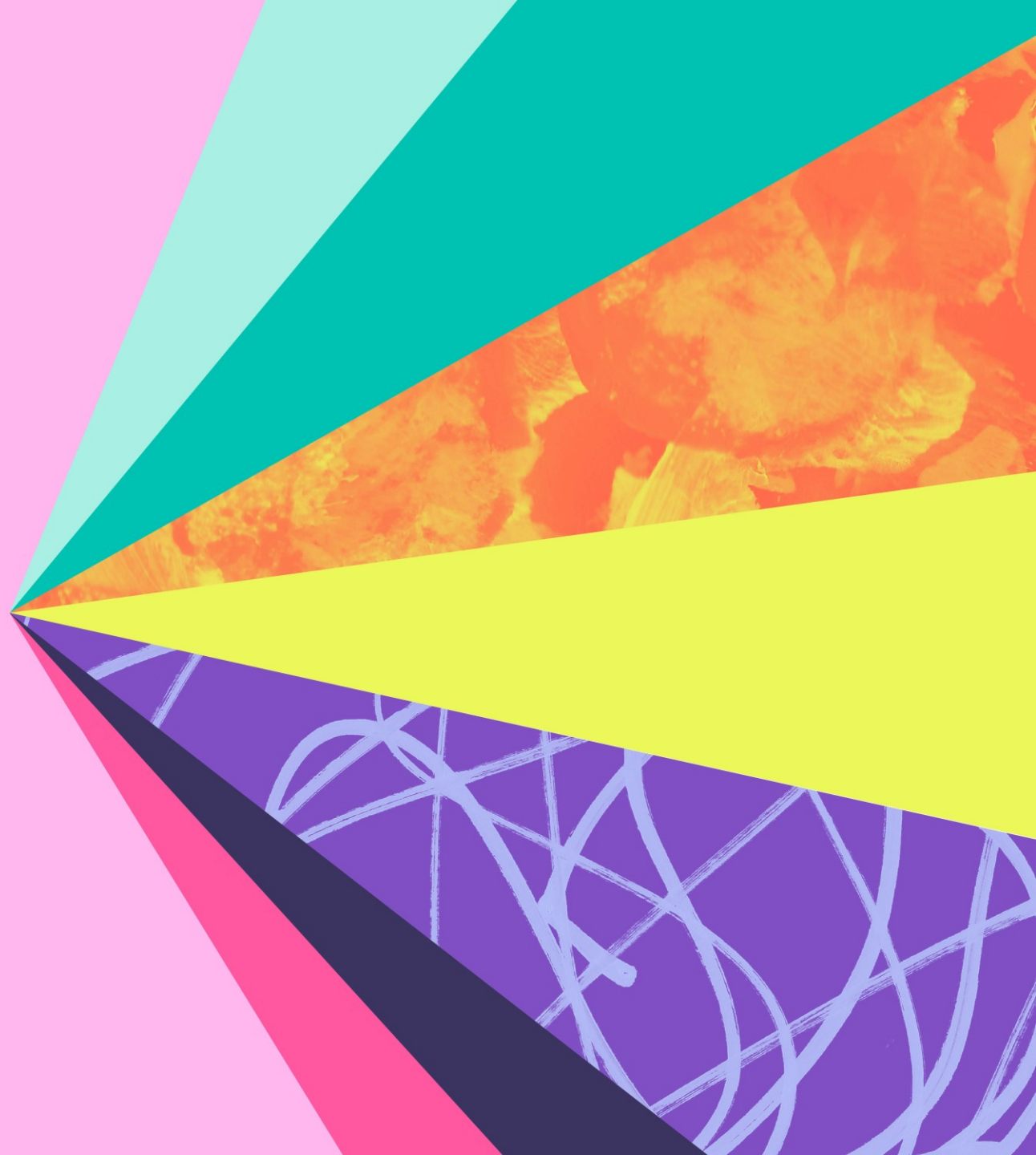
Kids services provide early support that are not diagnosis led. The Kids Shropshire Autism Support Service is available to parent carers and families of children and young people under 19 who are at any stage of the diagnostic journey or have received a diagnosis of autism and ADHD.



Early support for families

Early support can make a real difference for you and your family at the very beginning of your journey. You do not need to wait for a diagnosis to access support from Kids.

Kids encourage families to reach out as early as possible so they can receive timely, appropriate support when it matters most.





Early support for families

Kids Shropshire offers early support for both parent carers and children and young people. This may include a blend of group sessions and individual support, tailored to the needs identified by a Kids Practitioner.



Kids

Disabled children

Kids will be offering the following support to families:

Bespoke workshops that cover:

- Introduction to neurodiversity
- Understanding behaviours
- EBSA
- Sleep
- Pathological Demand Avoidance (PDA)
- Sensory difficulties

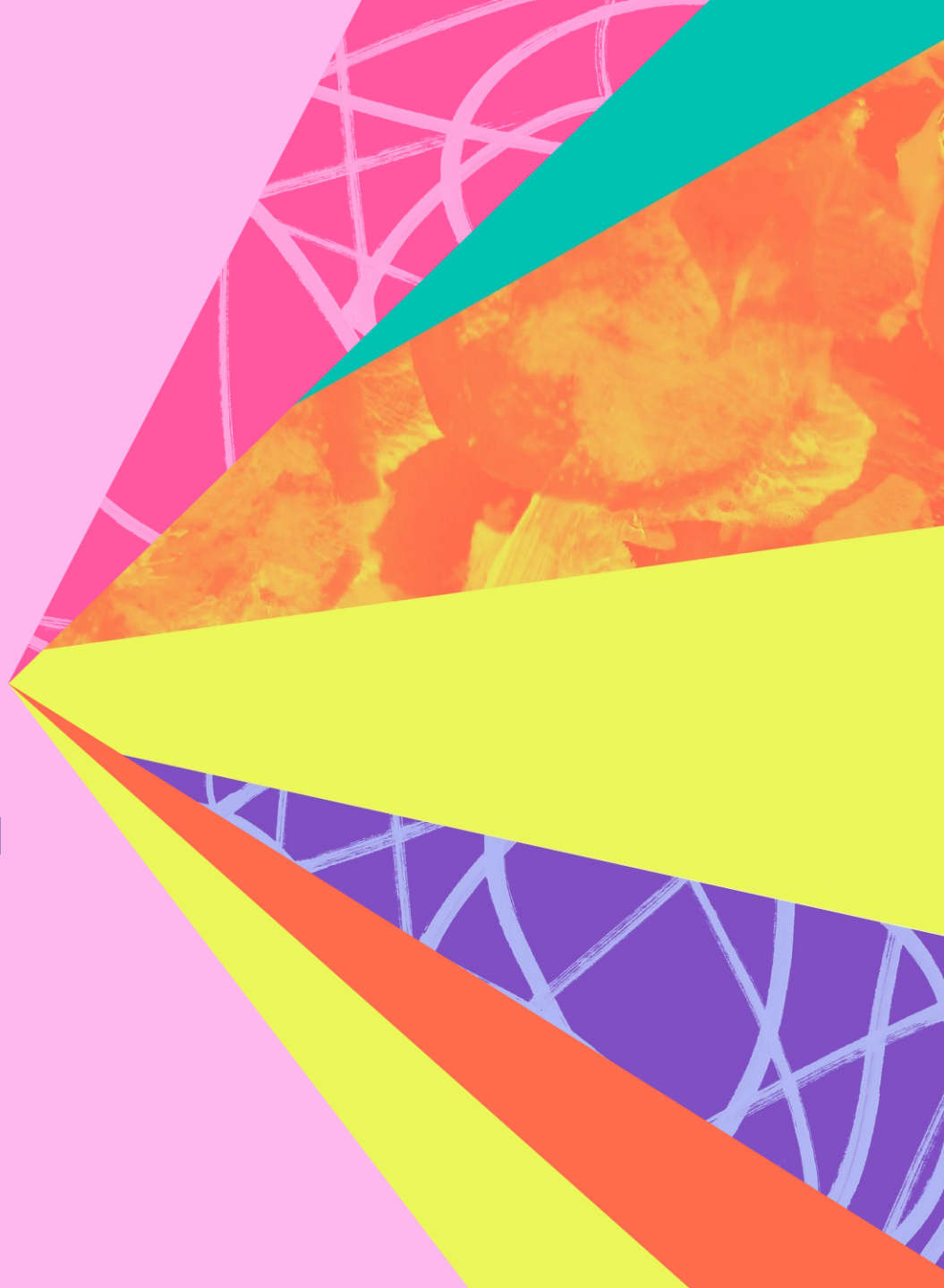


Disabled children
say we can

The 'Healthy Parent Carer' programme

The **Healthy Parent Carer** programme is designed to strengthen parent carers' resilience and overall wellbeing.

This programme focuses on improving health and wellbeing by helping parent carers build confidence, develop practical problem-solving skills, and set achievable personal goals. Through guided activities and supportive discussions, parents are encouraged to explore what helps them thrive and to develop strategies they can continue using long after the programme ends.



Riding the Rapids

A programme designed to help parent carers understand their child's behaviour and develop supportive, practical strategies.

The course helps parents explore their child's behaviour in the context of their additional needs and learn approaches that encourage positive behaviour. It also supports parents to build confidence and develop stress-management techniques that can make day-to-day challenges easier to navigate.

The programme is collaborative, giving parents the opportunity to learn together, share experiences, and develop tools they can continue to use long after the course has finished.





Children and young person offer

Lego therapy – 5-16years

These play-based group sessions give children the opportunity to develop a range of important skills, including resilience, problem-solving, and communication, in a relaxed, pressure-free and enjoyable environment.

EBSA support group – Online & Face to Face. - 8-13 years

Supportive. Understanding. No judgement.

Activity based sessions to learn ways to manage anxiety, understand their feelings, build resilience at their own pace.

Strengthen communication skills

Follows the "understanding me" programme.

Youth wellbeing Group – Online – 14-19 years

A supportive and inclusive space to connect with others who share similar experiences.

The group focuses on wellbeing, providing opportunities to build confidence, form friendships, and take part in meaningful, enjoyable activities. It is a welcoming environment where young people can be themselves, explore their interests, and develop positive strategies for wellbeing.

Coffee and connect sessions

Kids will facilitate regular

- Coffee mornings and drop in sessions
- Attend partnership events

For more details check out our website.

Web: kids.org.uk/shropshire-universal-autism-support-service





How to refer into the service:

Parent/carers can complete our online referral form,
via the link below:

[Shropshire Universal Autism Support Service - Kids](#)

How to Contact Us:

Phone: (01743) 644506

Facebook www.facebook.com/kidsshropshire

Email: kids.shropshire@kids.org.uk

Web: kids.org.uk/shropshire-universal-autism-support-service



Local Area SEND Reform Plan

National SEND Reforms: Shropshire Implications

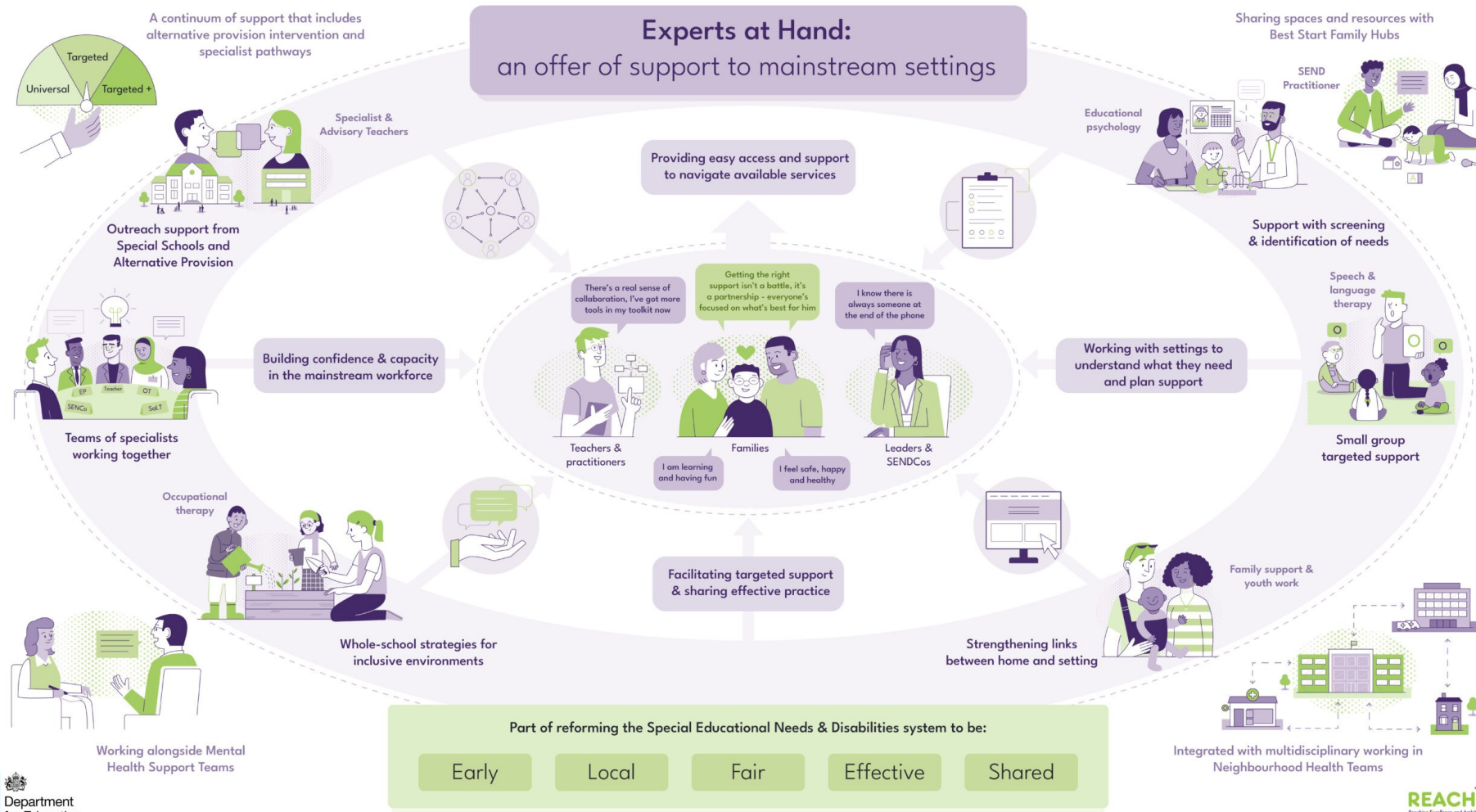
National direction (SEND & AP reforms)

- Clearer **national standards** for SEND & AP; families know expectations
- **Inclusive mainstream practice** focus; earlier intervention; fewer avoidable EHCPs
- More **transparency & accountability** via data, dashboards, improvement cycles
- Consistent **EHCP quality/timeliness**; clearer processes; stronger partnerships
- Aligned **education, health, care** planning, commissioning, delivery
- Push for **value for money** & sustainable high needs funding;

What this means for Shropshire

- Confirm & share **local “SEND standard”**; families/settings know what good looks like
- Strengthen **front door/graduated response**; early help, advice, outreach; meet needs earlier
- Improve **EHCP timeliness/quality**; consistent practice, strong QA, target delays
- Use reforms to shape system-wide delivery plan; One Plan
- Workforce reform and **recruitment** to build capacity to deliver Experts at Hand Offer.

Experts at Hand Offer



- EAHO is a core pillar of SEND reform designed to strengthen mainstream settings' capability to meet needs earlier and more effectively
- Experts at Hand and SEND Transformation guidance was published 15th April
- Further EAH guidance is expected around 7th May



What EAHO Provides / Changes:	What This Looks Like in Practice:
Provides a defined route for mainstream settings to access specialist support from:	<ul style="list-style-type: none">➤ Educational Psychologists (EPs) and EP assistants➤ Speech & Language Therapists (SALTs) and assistants➤ Occupational Therapists (OTs) and assistants
Shifts practice away from 1:1, individual referral models toward:	<ul style="list-style-type: none">➤ Group-based interventions➤ Whole-setting advice, modelling, and capability-building➤ Strategic workforce deployment across education & health
Builds embedded capability within mainstream, enabling settings to:	<ul style="list-style-type: none">➤ Understand needs within their cohort➤ Strengthen universal and targeted provision➤ Use specialist expertise strategically rather than reactively➤ Reduce reliance on statutory assessment and individualised provision where not required

EaH Indicative funding (as of 15th April)

Shropshire's indicative allocation for 2026/27: **£1,943,857**

- At least 80% of funding must be spent on EAH direct delivery for all settings, staff and their children and young people.
- No more than 10% of funding can be spent on admin costs for delivering the EAH offer.
- No more than 10% of funding can be spent on local authority transformation costs, including staff or other associated costs.

Local Area SEND Reform Plan

- LA must submit a Local SEND Reform Plan by **19th June**.
- Writing off HNB deficit (up to 90%) is contingent on DfE approval of this plan.
- The Secretary of State will make the final decision to approve or not to approve a plan; assessment outcomes will be communicated in September

The plan must include:

Vision - What is the local area trying to achieve?

Strategy - What is the strategy and road map for the next three years?

- What will be delivered in year 1 and how?
- How will the local area ensure engagement and co-production?
- What are the risks and associated mitigations?
- What are the dependencies?
- What is the high needs capital strategy and how does it evidence a shift to Inclusive Mainstream?

Monitoring and Evaluation - How will the local area know if they are successful?

Governance - How will the local area ensure it remains on track?

Over to you...

We want your input into these key areas of the Local Area Reform Plan:

1. What are the main strengths of the current SEND provision and local support offer in Shropshire?
2. What would you like Shropshire to achieve through the Local Area SEND Reform Plan?
3. Where do you want the Shropshire SEND Partnership to be in three years time? What will be different? What will have been achieved?
4. What outcomes or improvements do you think should be delivered in the first year? What are the key priorities? (maximum of 3)
5. How would you like system partners and stakeholders to be engaged and involved in co-production?
6. What will success in implementing the SEND reforms look like in Shropshire?
7. Please share any additional comments or suggestions regarding the SEND Reform Plan.



[Shropshire Local Area
SEND Reform Plan -
School and Setting
Consultation – Fill in form](#)

NB: this form closes on 11th May

Early Years SEND Support Officer Support (EySSO) Feedback Survey

[Early Years SEND Support Officer Support \(EySSO\) Feedback – Fill in form](#)

Early Years SEND Support Officer
Support (EySSO) Feedback



CPD

- **Early Years SEND solution circle – monthly**

Book through the EY CPD page, an opportunity for a group of peers to support each other in a solution focused way.

- **EY Graduated response through the Assess-Plan-do-review (A-P-D-R) process - 2 June 2026, 18:00 - 19:00**

[EY Graduated response through the Assess-Plan-Do-Review \(A-D-P-R\) process Tickets, Tue 2 Jun 2026 at 18:00 | Eventbrite](#)

- **Shropshire Annual Review Training -18 June 2026. 09:30 - 11:00**

[Shropshire Annual Review Training Tickets, Thu, Jun 18, 2026 at 9:30 AM | Eventbrite](#)



CPD – coming soon



Evening training